

ORDINANCE NO.: D—2019-20

TO THE HONORABLE, THE OUTAGAMIE COUNTY BOARD OF SUPERVISORS

LADIES AND GENTLEMEN:

MAJORITY

1 Currently, there is a speed limit of 55 miles per hour on CTH GV in the Towns of Grand
2 Chute / Greenville between CTH CB and McCarthy Road. There is a speed limit of 45
3 miles per hour on CTH GV from STH 96 northwesterly to 0.25 miles west of McCarthy
4 Road. The Highway, Recycling and Solid Waste Committee recommends a 45 miles
5 per hour speed limit on CTH GV between CTH CB and McCarthy Road to the Towns of
6 Grand Chute / Greenville by amending the Outagamie County Code of Ordinances
7 Section 36-91 - “Speed Zones Established” as listed below.
8

9 NOW THEREFORE, the undersigned members of the Highway, Recycling and Solid Waste
10 Committee recommend adoption of the following ordinance.

11 BE IT ORDAINED, that the Outagamie County Board of Supervisors does amend Section 36-91
12 “Speed Zones Established” of the Outagamie County Code of Ordinances to read as follows (additions
13 are in bold, italics and underlined; deletions are struck through):

14 Sec. 36-91. – Speed zones established

15 (5) Forty-five miles per hour.

16 CTH “GV” From STH 96 northwesterly to ~~0.25 miles west of McCarthy Rd.~~ ***CTH “CB”***, and

17 BE IT FURTHER ORDAINED, that this ordinance shall be in effect upon approval by the
18 Outagamie County Board of Supervisors, publication per §59.14 and §66.0103 State Statutes, upon
19 erection of standard signs, and signing as required by Wisconsin State Statutes, and

20 BE IT FINALLY ORDAINED, that the Outagamie County Clerk be directed to forward a copy
21 of this resolution to the Outagamie County Highway Commissioner and Municipal Code Corporation.

22 Dated this ____ day of October 2019

23

24

Respectfully Submitted,
HIGHWAY, RECYCLING AND SOLID WASTE
COMMITTEE

Donald DeGroot

James Mc Daniel

Bob Buchman

Dennis Clegg

Brian Peterson

Duly and officially adopted by the County Board on: _____

Signed: _____
Board Chairperson

County Clerk

Approved: _____

Vetoed: _____

Signed: _____
County Executive

1
2
3
4
5
6
7
8
9
10
11
12
13
14
15
16
17
18
19
20
21
22
23
24
25
26
27
28
29
30
31
32
33



Highway Department

1313 Holland Road, Appleton, WI 54911-8947
Phone: (920) 832--5673 Fax: (920) 832--2032
Visit our website at www.outagamie.org

September 25, 2019

To: Highway, Recycling & Solid Waste Committee
From: Andrew Rowell, PE, Highway Engineer *Andrew Rowell*

Subject: CTH GV – CTH CB to McCarthy Road – Speed Limit Review

The Highway Department has received local resolutions from the Town of Grand Chute and the Town of Greenville requesting a speed limit change along County Trunk Highway (CTH) GV, between CTH CB to the west and McCarthy Road to the east. This memo summarizes existing conditions, traffic crash information, future plans for the roadway, and recommendations for the speed limit.

Existing Conditions

This 1 mile study segment is a 2-lane rural highway with 4-foot paved shoulders and additional gravel shoulders. This roadway used to be a state trunk highway before State Trunk Highway (STH) 15 was built. A multi-lane roundabout exists at CTH CB, and a single-lane roundabout is being constructed at the McCarthy Road intersection. One other major intersection exists along the corridor, Mayflower Drive, which is a stop-controlled intersection with right turn lanes along CTH GV. A dead-end stub of Greenville Drive exists near the western limits, and serves a couple residential properties.

The existing speed limit is 55 mph from CTH CB east until it changes to 45 mph about 800 feet west of McCarthy Road. The most recent Wisconsin DOT traffic count shows an AADT of 6,200 west of Mayflower Drive. Major parallel roadways include STH 15 to the north, and STH 96 to the south.

CTH GV is an Access Controlled Highway. Approximately 18 access points exist on this segment of roadway. Development along the roadway varies, with a few commercial properties near the west end, mostly undeveloped farm fields along the majority, and some residential on the south side near McCarthy Drive. Undeveloped plots are expected to develop in the foreseeable future. Access will



Aerial overview of subject corridor

primarily be from the side roads, but a new commercial access or new street connection to CTH GV may be allowable following the requirements of the access control ordinance.

Crash Data Review

A review of crashes was made for the segment. In the last 10 full years of data 2009 through 2018, there were approximately 51 total crashes and 22 injury crashes in the study area, outside of the CTH CB and the McCarthy Road intersections. Of the total crashes, 27 were at the intersection of Mayflower Drive. An additional 11 crashes were single-car run-off-the-road (ROTR) crashes associated with the horizontal curve near the Greenville Drive dead-end. Four more ROTR crashes also occurred elsewhere. The run-off-the-road crashes are attributed to too high of speeds and adverse weather conditions.

Almost all crashes at the CTH GV & Mayflower Drive were angle crashes. The roadways intersect at a skew angle that makes it difficult for a driver to check both directions at the stop sign on Mayflower Drive. Right turn lanes were added on CTH GV, and minor pavement marking realignment was made for Mayflower Road in 2014 which appears to have reduced the frequency of crashes, with only 7 of the 27 crashes since the project.

However, traffic volumes continue to increase on CTH GV and on Mayflower Drive, putting increased pressure to do further improvements. A roundabout may be a long-term solution at this intersection. Reducing the speed limit should help reduce the severity of crashes that may occur in the meantime.

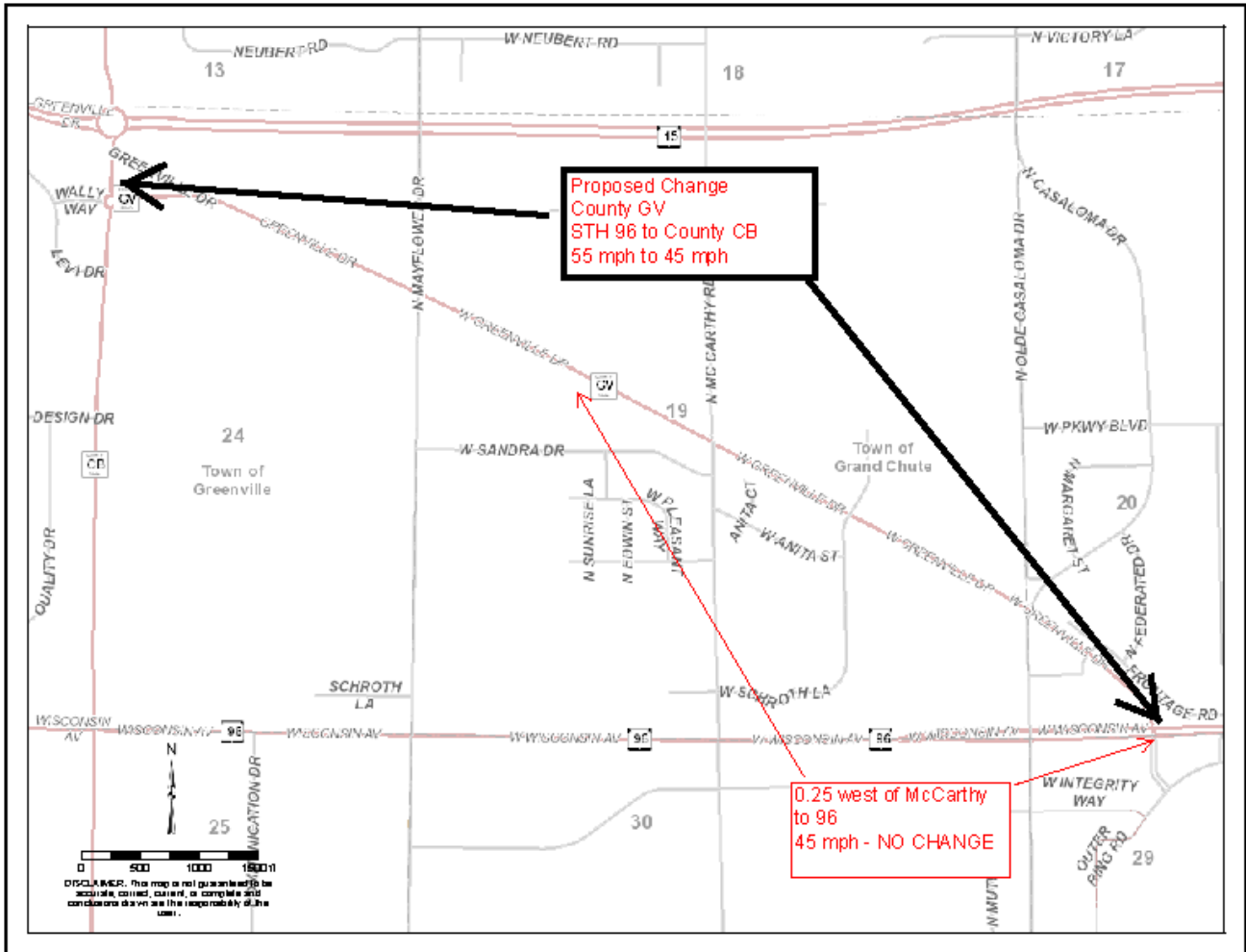
The ROTR crashes are generally westbound entering the curves at too high of speeds. Some of these are during adverse weather conditions, and some during clear conditions. A reduction in speed limit may reduce incidences near this horizontal curve.

Future of Corridor

Developments are occurring in the general vicinity of the CTH GV corridor. The Champions Center will be opening in Fall 2019. More developments are in the planning stages around this site. The roundabout being built at McCarthy Road will provide a safer way to traverse the intersection, and will create a natural traffic calming for the corridor. A reduction in speed limit is appropriate for this corridor as development continues.

Recommendations

It is recommended to ***reduce the speed limit for this segment of CTH GV from 55 mph to 45 mph between CTH CB and McCarthy Road.*** This speed limit reduction may be made following the provisions of State Statutes 349.11. Speed enforcement efforts should be made by local police and County Sheriff's departments to control speeds on this corridor.



TOWN OF GRAND CHUTE
BOARD OF SUPERVISORS
(OUTAGAMIE COUNTY, STATE OF WISCONSIN)
RESOLUTION 14 - SERIES OF 2019

A RESOLUTION REQUESTING THE OUTAGAMIE COUNTY BOARD ACT TO LOWER THE SPEED LIMIT ON PORTIONS OF OUTAGMIE COUNTY HIGHWAY GV TO 45 MILES PER HOUR

WHEREAS, Large portions of Outagamie County Highway GV are currently built to rural standards; and

WHEREAS, Outagamie County Highway GV is currently posted at 45 miles per hour at a point beginning approximately 0.3 miles east of Mayflower Drive; and

WHEREAS, Although the Town of Grand Chute Police Department handles most patrol duties along the Outagamie County GV corridor and is often the first to respond to automobile accidents, The Town Board is powerless by itself to reduce speed limits without the cooperation of the Outagamie County Board and/or its committees; and

WHEREAS, The Town of Greenville adopted Resolution 15-Series of 2019 requesting lowering of speeds on portions of Outagamie County Highway GV in February 2019; and

WHEREAS, To preserve public health, welfare and safety, the Town Board believes that lowering the speed limit along portions of Outagamie County Highway GV is a matter of urgency.

NOW THEREFORE, the Town Board of the Town of Grand Chute does hereby resolve:

- 1) The Town Board of the Town of Grand Chute requests the Outagamie County Board and its various committees, as applicable, to immediately lower the speed limit from 55 miles per hour to 45 miles per hour on Outagamie County Highway GV located within the Town of Grand Chute between Mayflower Drive and McCarthy Road.
- 2) Although portions of Outagamie County Highway GV located in the Town of Greenville are outside of the Town of Grand Chute's jurisdiction, the Town Board nevertheless encourages lowering the speed limit to promote safety and consistency throughout the entire Outagamie County Highway GV corridor.

Passed and approved this 1 day of October, 2019

TOWN OF GRAND CHUTE



By: David A. Schowalter
Town Chairperson



By: Angie Cian
Town Clerk

Resolution #15-19

**REQUESTING THE OUTAGAMIE COUNTY BOARD ACT TO LOWER SPEED
LIMITS ON PORTIONS OF COUNTY HIGHWAYS CA and GV
TO 45 MILES PER HOUR.**

WHEREAS, several large employers and retailers have located in the immediate vicinity of Outagamie County Highways CA and GV in the past several years; and

WHEREAS, Outagamie County Highways CA and GV in the Town of Greenville are currently built to rural standards; and

WHEREAS, The Town of Greenville Town Board is aware of a significant increase in automobile accidents and an increase in severity thereof in the immediate proximity along both the Outagamie County Highway CA & GV corridors; and

WHEREAS, the Town of Greenville Fire and Rescue are often the first to respond to automobile accidents, the Town Board is powerless by itself to reduce speed limits without the cooperation of the Outagamie County Board; and

WHEREAS, the Town of Grand Chute Town Board adopted Resolution 2-Series of 2019 requesting the lowering of speeds on portions of County Highway CA in January of 2019; and

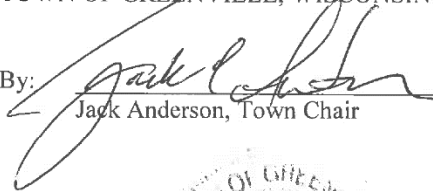
WHEREAS, to preserve the public health, welfare and safety, the Town Board believes lowering the speed limit along portions of Outagamie County Highway CA and GV is a matter of urgency.

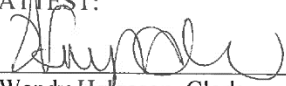
NOW, THEREFORE, BE IT RESOLVED that the Town Board of the Town of Greenville do ordain as follows:

1. Request the Outagamie County Highway Department reduce the current posted speed limit to 45 miles per hours for County Trunk Highway CA and County Trunk Highway GV located within the Town of Grand Chute and the Town of Greenville where said speed limit is currently 55 miles per hour.
2. Request the Outagamie County Sheriff's Department provide the necessary resources for the proper and consistent enforcement of this speed limit;

Resolution #15-19 was adopted by the Town of Greenville Town Board on the 11th day of February, 2019:

TOWN BOARD OF THE
TOWN OF GREENVILLE, WISCONSIN

By: 
Jack Anderson, Town Chair

ATTEST:

Wendy Helgeson, Clerk



Motion to Approve Resolution No. #15-19 made by: *Culbertson/Peters*

Votes:

Title	Name	Aye	Nay	Other
Supervisor	Culbertson	X		
Supervisor	Peters	X		
Supervisor	Strobel			X
Supervisor	Woods	X		
Chairperson	Anderson	X		

Posted: *February 13, 2019*