

BRIDGE # B-44-0007

INDEX OF SHEETS

- SHEET NO. 1 TITLE
- SHEET NO. NONE NONE
- SHEET NO. 2 ESTIMATE OF QUANTITIES
- SHEET NO. NONE MISCELLANEOUS QUANTITIES
- SHEET NO. 2A RIGHT OF WAY PLAT
- SHEET NO. 3-4 PLAN AND PROFILE STA 4+00 TO STA. 44+00
- SHEET NO. 5-10 DRAINAGE STRUCTURES AND STANDARD DETAILS
- SHEET NO. 11-21 CROSS SECTIONS

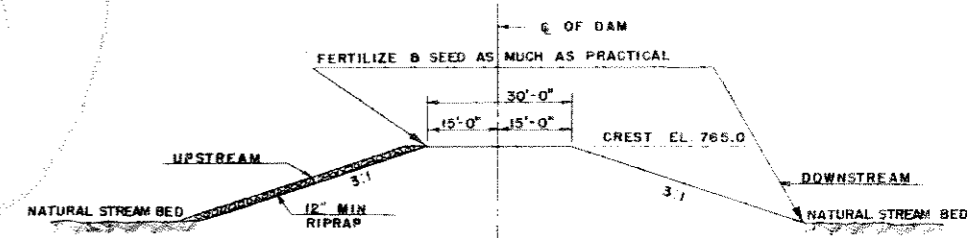
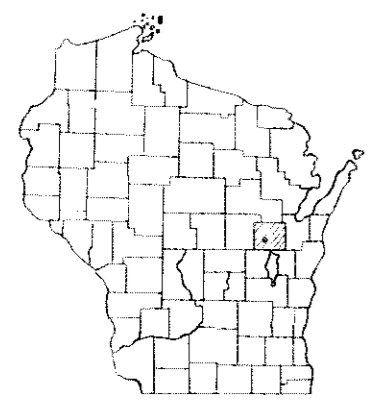
STATE OF WISCONSIN
STATE HIGHWAY COMMISSION OF WISCONSIN

COUNTY AND HIGHWAY	ROUTE AND SECTION	CLASS AND AGREEMENT	FEDERAL DIVISION OFFICE	SHEET NUMBER	TOTAL SHEETS
44.6	384.0		WIS SN	1	21

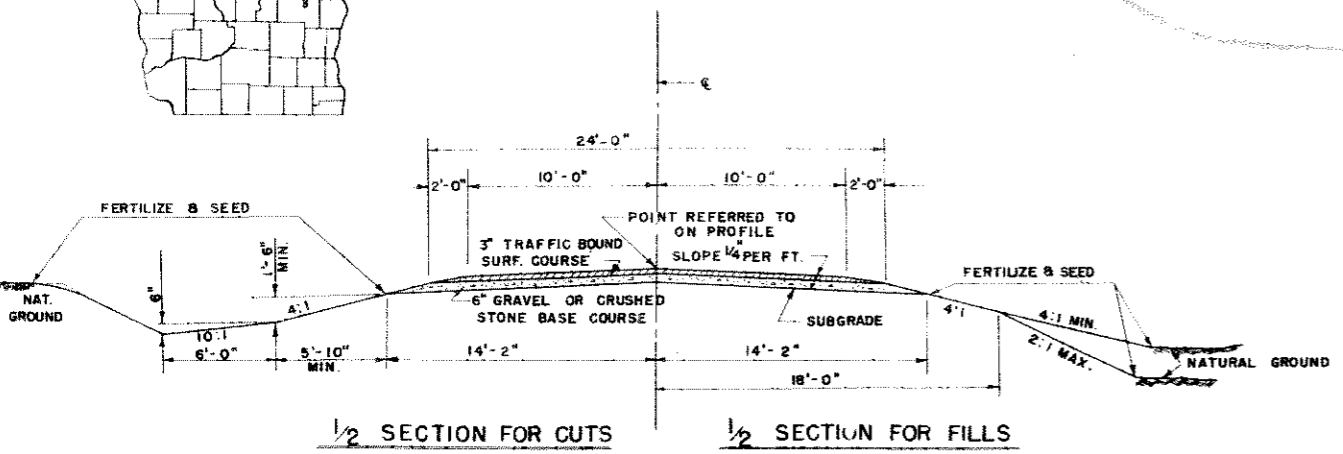
**PLAN AND PROFILE OF PROPOSED
 NEW LONDON - STEPHENSVILLE ROAD
 (APPROACHES TO WOLF RIVER BRIDGE)**

(B-44-4)

OUTAGAMIE COUNTY
 PROJECT S 0384(2)

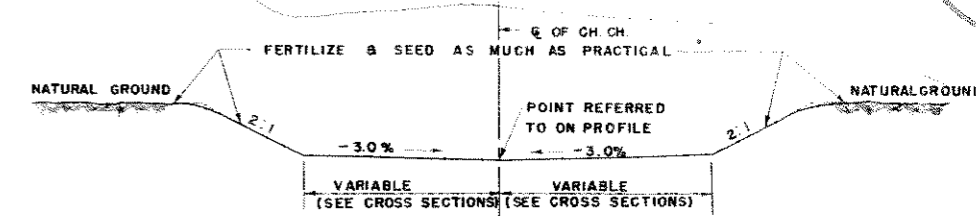


TYPICAL SECTION FOR DIVERSION DAM



STANDARD FINISHED SECTION FOR APPROACHES

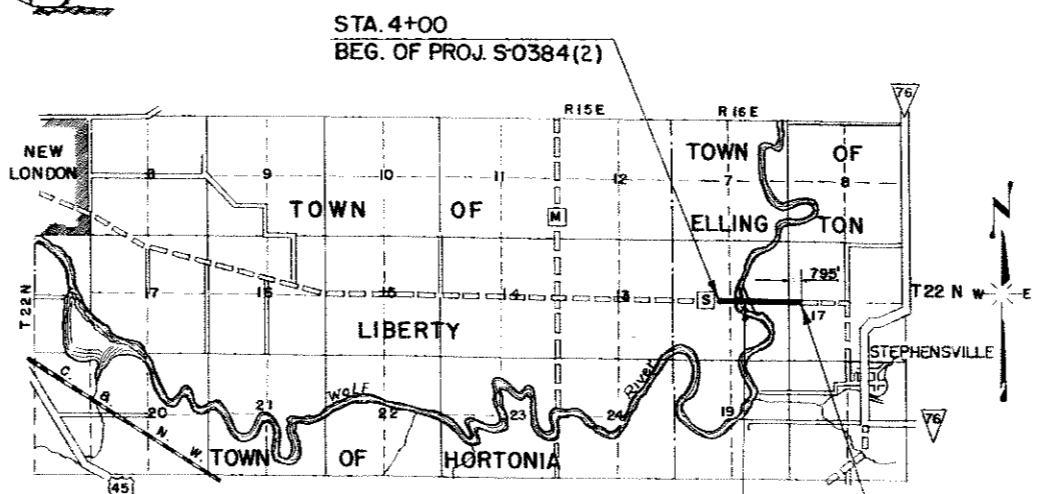
SCALES
 PLAN 1 IN. = 100 FT.
 PROFILE HOR. 1 IN. = 100 FT. VERT. 1 IN. = 10 FT.
 CROSS SECTIONS HOR. 1 IN. = 5 FT. VERT. 1 IN. = 5 FT.



TYPICAL SECTION FOR CHANNEL CHANGE

GENERAL NOTES

DETAILS OF CONSTRUCTION NOT SHOWN HERE SHALL CONFORM TO THE PERTINENT REQUIREMENTS OF THE STANDARD SPECIFICATIONS AND THE APPLICABLE SPECIAL PROVISIONS.



STA. 19+02.12 TO 21+93.88 (BRIDGE)
 EXCEPTION TO NET LENGTH
 (PROJ. S 0384 (1))

STA. 44+00
 END OF PROJ. S-0384 (2)

CONVENTIONAL SIGNS

STATE LINE	-----	CULVERTS IN PLACE	=====
COUNTY LINE	-----	CULVERTS REQUIRED	-----
TOWNSHIP OR RANGE LINE	-----	DROP INLET	□
SECTION LINE	-----	POWER POLE	—●—
NEW RIGHT OF WAY LINE	-----	TELEPHONE OR TELEGRAPH POLE	—○—
PRESENT RIGHT OF WAY LINE	-----	RIGHT OF WAY MARKERS	—▲—
WIRE FENCE { WOVEN	-----	REFERENCE STAKE FOR HUBS ONLY	—●—
{ BARBED	-----	MARSH	—●—
LOT LINE	-----	HEDGE	—●—
CORPORATE OR CITY LIMITS	-----	TREES	—●—
PROPERTY LINE	-----	GROUND ELEVATION	—●—
TRAVELED WAY OR P.E.	-----	GRADE ELEVATION	—●—
RAILROADS	-----		
BASE OR SURVEY LINE	-----		

LAYOUT

SCALE 1 MILE
 NET LENGTH OF CENTERLINE 0.702 MILES

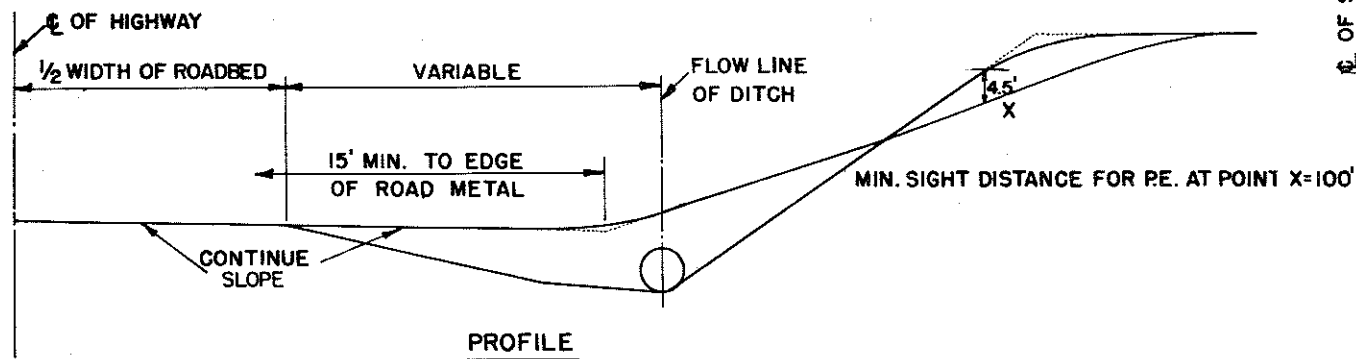
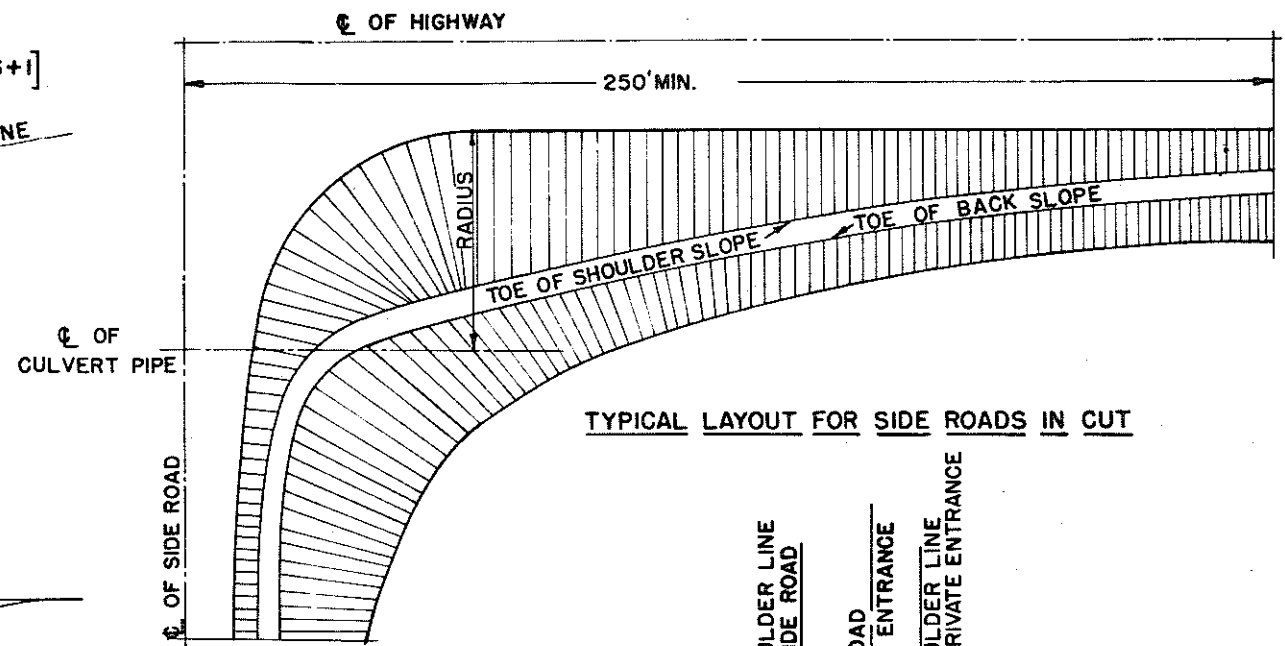
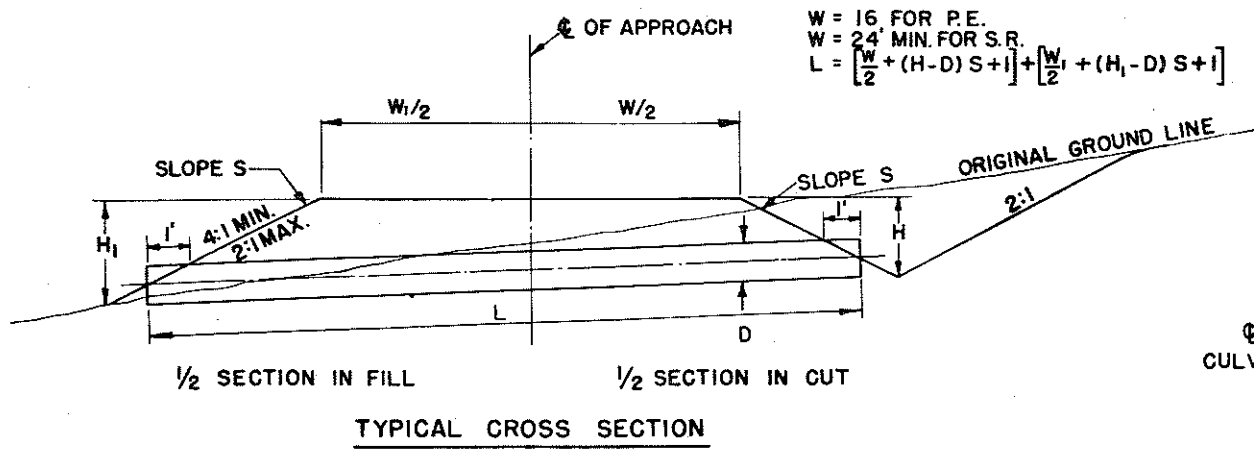
BRIDGE-FILE # 1

APPROVED DETAIL DRAWINGS ARE AS FOLLOWS:

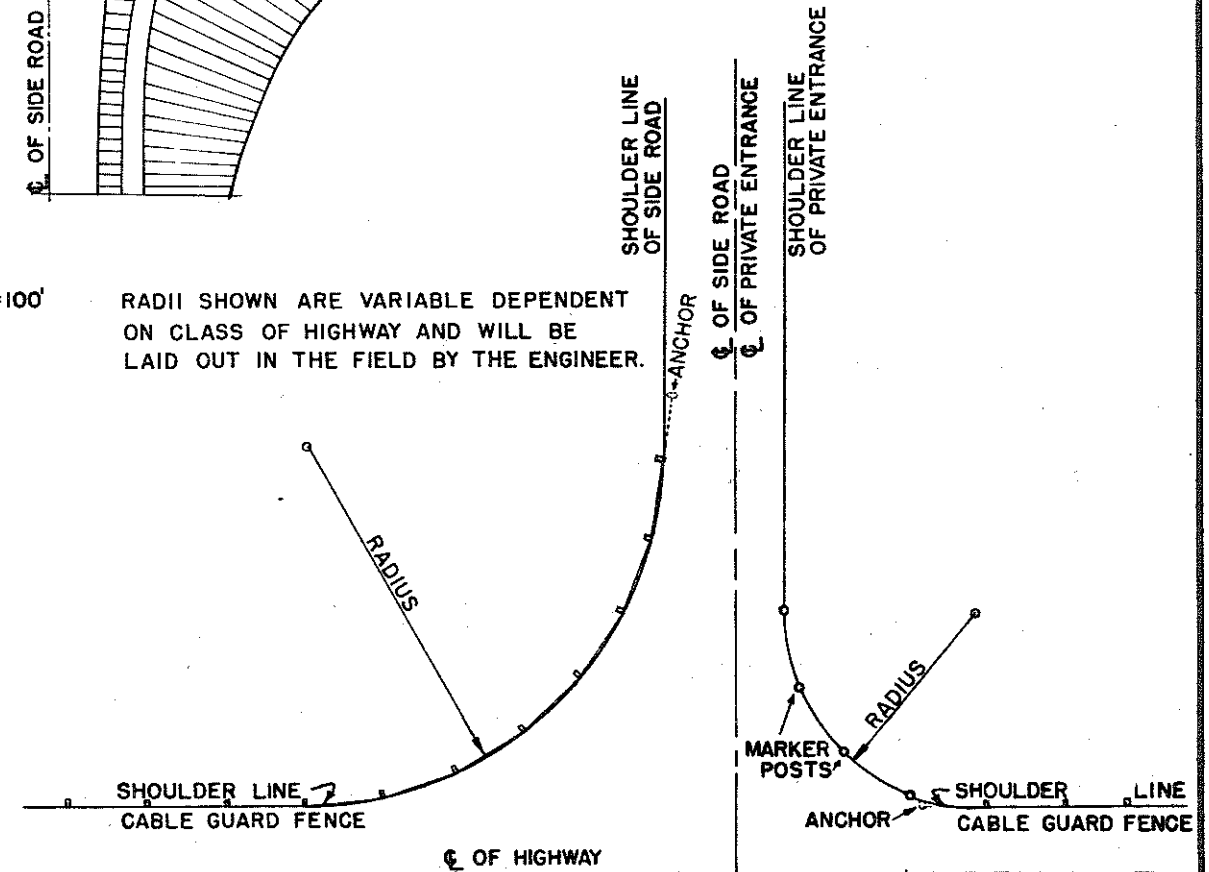
DETAILS OF PRIVATE ENTRANCE APPROACHES	J-3.1.1
CULVERT END WALLS - MORTAR RUBBLE MASONRY	6-3.1.1
MARKER POSTS FOR SHOULDER DELINEATION AND CULVERTS	7-1.1.1
MARKER POSTS FOR RIGHT OF WAY	7-1.2.1
3 WIRE CABLE GUARD FENCE	7-2.1.2
CONSTRUCTION BARRICADE	7-4.1.1

STATE HIGHWAY COMMISSION OF WISCONSIN MADISON, WIS.		U.S. DEPARTMENT OF AGRICULTURE BUREAU OF PUBLIC ROADS	
Surveyor E.W.S.	Note Book 9037	RECOMMENDED FOR APPROVAL DATE	
Div. Computer A.L.C.	M.O. Checker	DISTRICT ENGINEER	
Div. Checker R.L.B.	Correct	PUBLIC ROADS ADMINISTRATION	
CORRECT		FEDERAL WORKS AGENCY	
DATE 4/11/49	<i>M. Kullentson</i>	APPROVED DATE	
RECOMMENDED FOR APPROVAL DATE 4/29/49		DESIGN ENGINEER	
DATE 4/29 1949		CONSTRUCTION ENGINEER	
APPROVED		DIVISION ENGINEER	
<i>E. H. Reardon</i>		PUBLIC WORKS ADMINISTRATION	
STATE HIGHWAY ENGINEER		FEDERAL WORKS AGENCY	

C-19



RADIUS SHOWN ARE VARIABLE DEPENDENT ON CLASS OF HIGHWAY AND WILL BE LAID OUT IN THE FIELD BY THE ENGINEER.



DETAILS OF PRIVATE ENTRANCE AND SIDE ROAD APPROACHES

STATE HIGHWAY COMMISSION OF WISC.

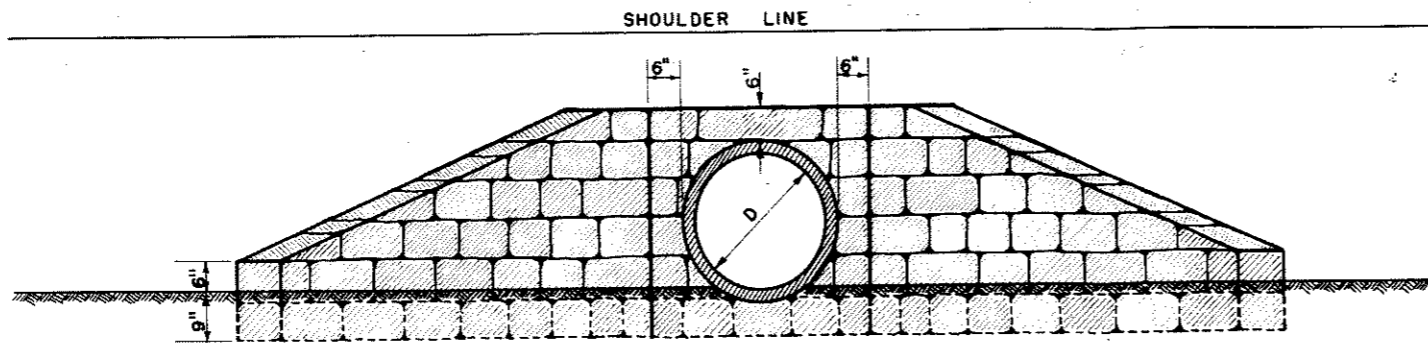
RECOMMENDED FOR APPROVAL:

Frank Crow
DESIGN ENGINEER

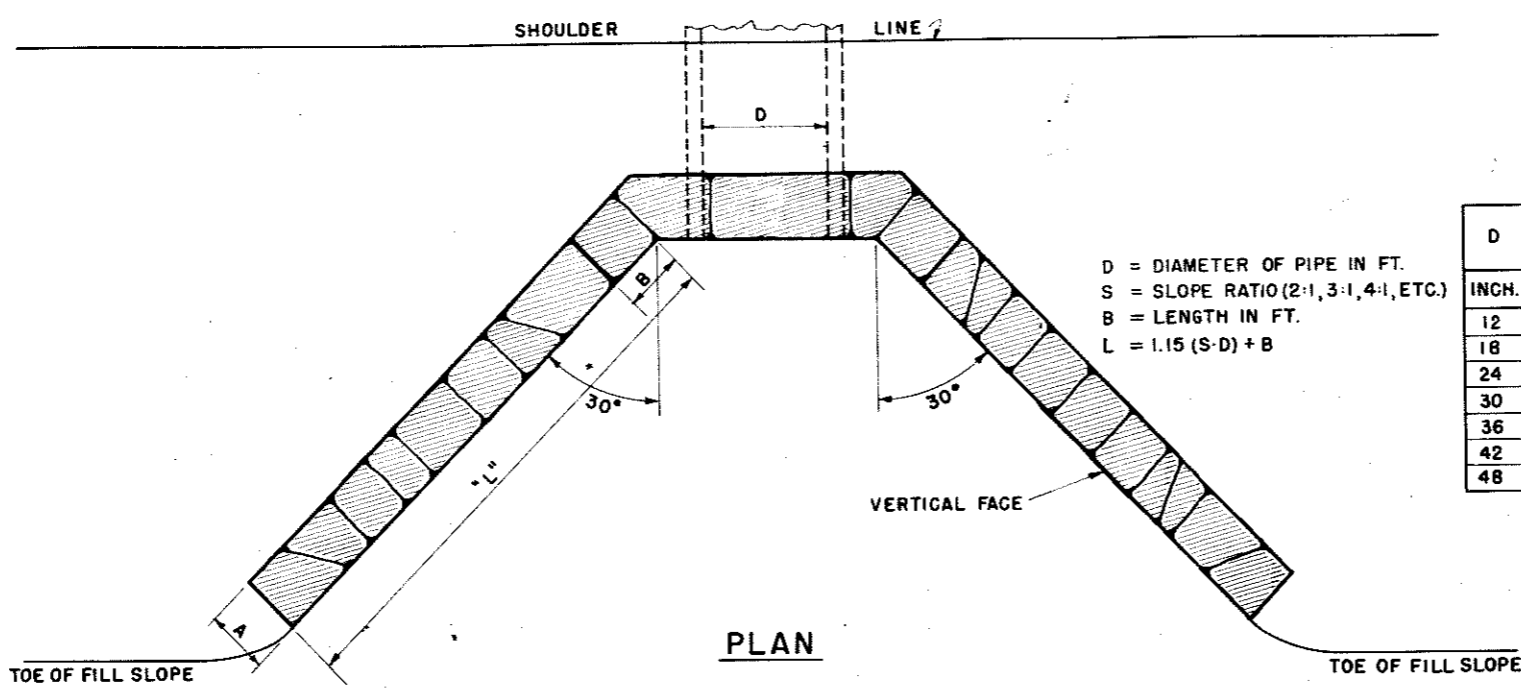
W. Blue
CONSTRUCTION ENGINEER

DATE
APPROVED: OCT. 1, 1945

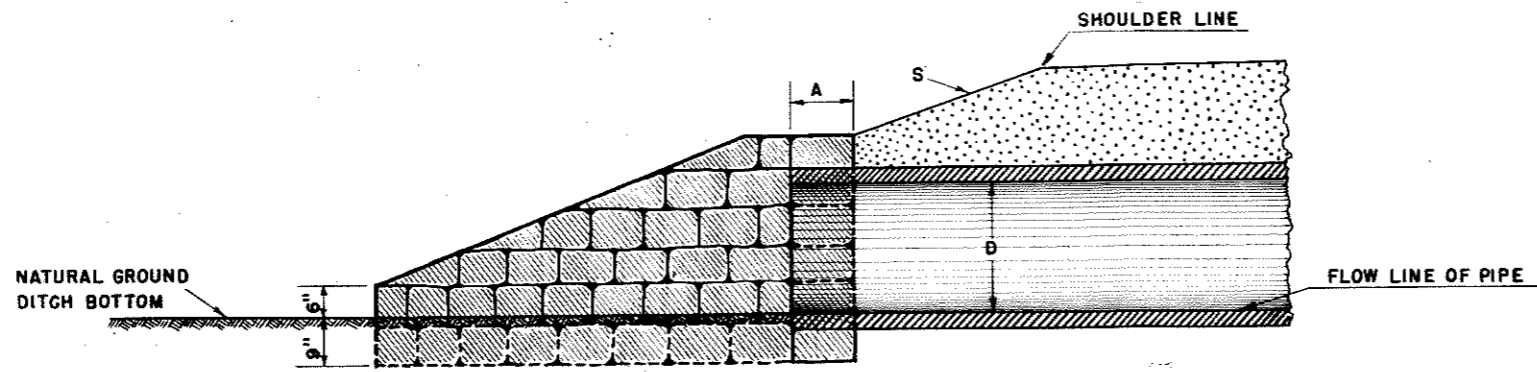
DRAWN
DATE
CHECKED
STATE HIGHWAY ENGINEER



END ELEVATION



PLAN



SIDE ELEVATION

D = DIAMETER OF PIPE IN FT.
 S = SLOPE RATIO (2:1, 3:1, 4:1, ETC.)
 B = LENGTH IN FT.
 L = 1.15 (S-D) + B

D	A	B	L	QUANT. FOR 2 ENDW'LS	L	QUANT. FOR 2 ENDW'LS	L	QUANT. FOR 2 ENDW'LS
INCH.	INCH.	INCH.	2:1 SLOPE	C.Y.	3:1 SLOPE	C.Y.	4:1 SLOPE	C.Y.
12	12	7	2'-11"	1.3	4'-0"	1.6	5'-2"	1.9
18	12	7	4'-0"	1.9	5'-9"	2.4	7'-6"	2.9
24	12	7	5'-2"	2.6	7'-6"	3.4	9'-10"	4.1
30	12	7	6'-4"	3.4	9'-3"	4.5	12'-1"	5.5
36	15	9	7'-8"	5.4	11'-1"	7.1	14'-7"	8.9
42	15	9	8'-10"	6.6	12'-10"	8.8	16'-10"	11.0
48	18	10	10'-0"	9.5	14'-8"	12.8	19'-3"	16.2

GENERAL NOTES

DETAILS OF CONSTRUCTION NOT SHOWN SHALL BE IN ACCORDANCE WITH THE REQUIREMENTS OF THE STANDARD SPECIFICATIONS.

AT PRIVATE ENTRANCES LAY PIPE ALONG THE CENTERLINE OF HIGHWAY DITCH.
 CONSTRUCT 16 FT. MIN. WIDTH GRADE - 2:1 SLOPES AT PRIVATE ENTRANCES.

TYPE "A"

CULVERT END WALLS
MORTAR RUBBLE MASONRY

STATE HIGHWAY COMMISSION OF WISCONSIN

RECOMMENDED FOR APPROVAL

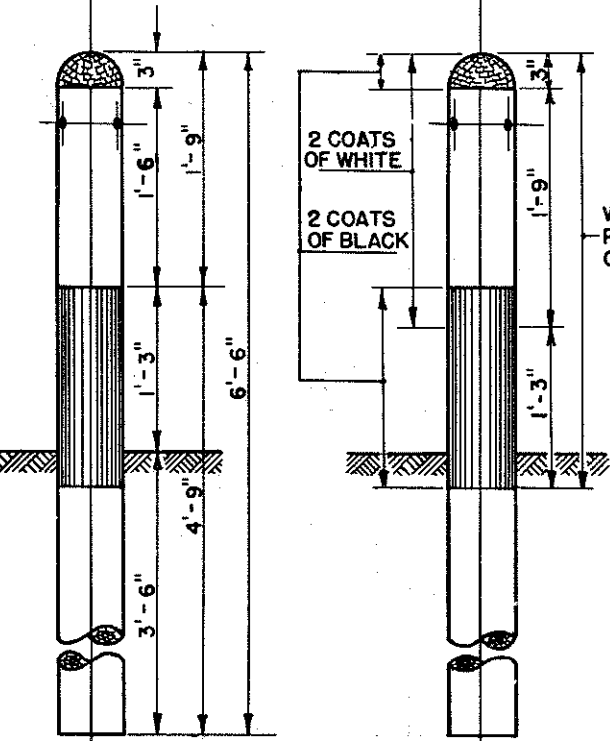
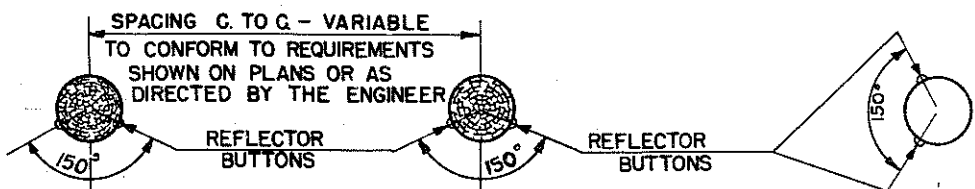
Frank Crave DESIGN ENGINEER *Carl Blute* CONSTRUCTION ENGINEER

APPROVED:

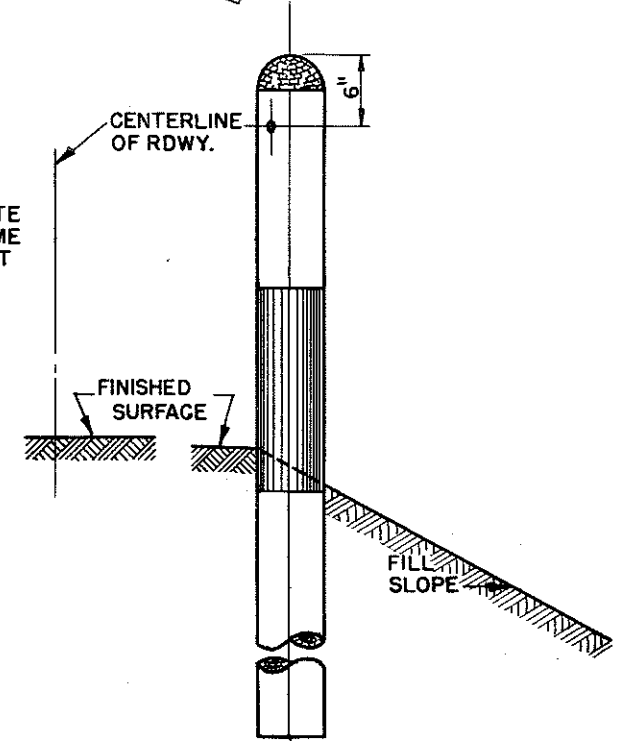
DATE OCT. 1, 1945

E. C. Rott
 STATE HIGHWAY ENGINEER

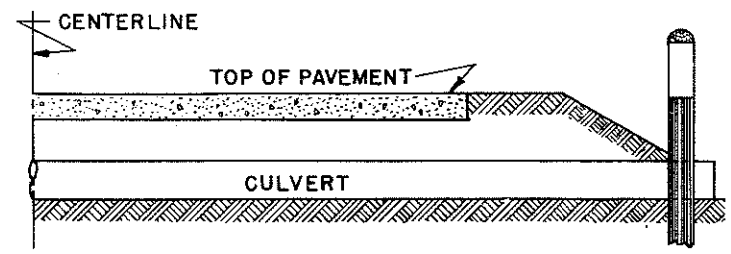
DRAWN DIV. 3 CHECKED NFC.



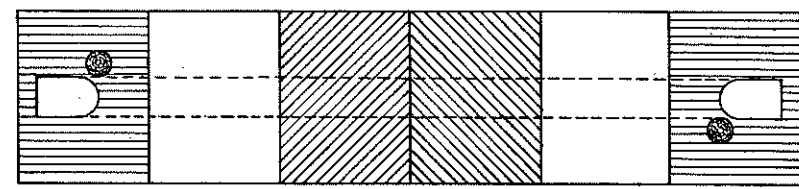
ELEVATION SHOWING SPACING



ELEVATION SHOWING LOCATION ON ROAD SHOULDER



SECTION WITH CULVERT MARKER



PLAN SKETCH

SPACING OF MARKER POSTS FOR VARYING LENGTHS OF SHOULDER TO BE PROTECTED.

100 FT. TO 500 FT. ----- 50 FT.
 500 FT. OR MORE ----- 100 FT.
 SEE MISCELLANEOUS QUANTITY SHEET OF PLANS.

GENERAL NOTES

CONSTRUCTION DETAILS NOT SHOWN HERE SHALL CONFORM TO THE PERTINENT REQUIREMENTS OF THE STANDARD SPECIFICATIONS AND THE APPLICABLE SPECIAL PROVISIONS.

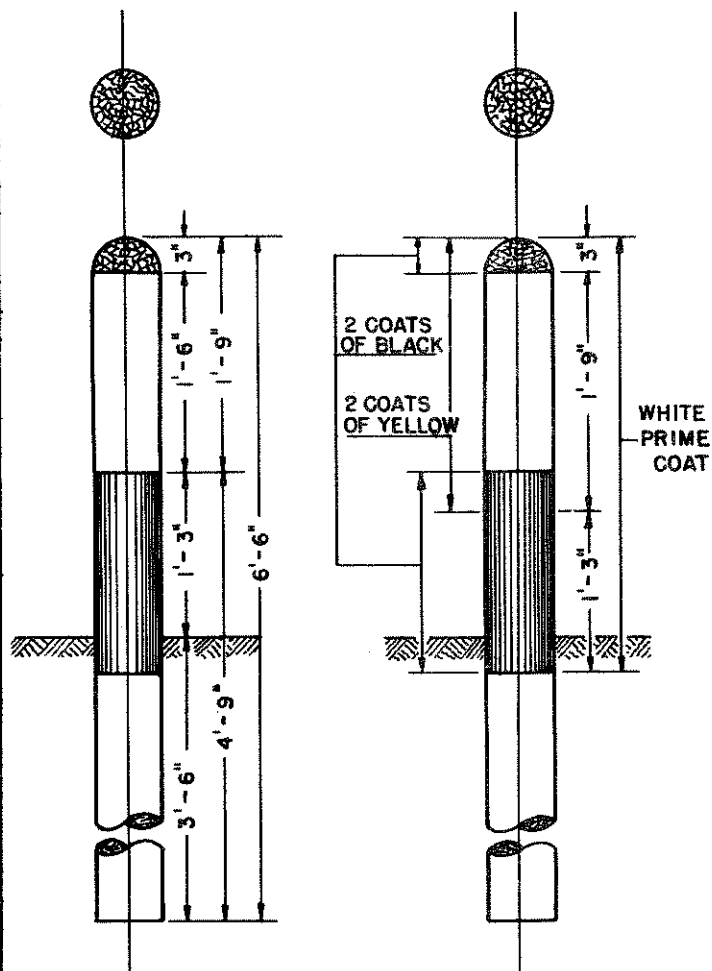
POSTS SHALL BE 6" CONFORMING TO THE REQUIREMENTS OF SECTION 4124

REFLECTOR BUTTONS SHALL BE SIZE NO.1 CRYSTAL, FOR WOOD MOUNTING. DRILL MOUNTING HOLE TO FIT BUTTON (GENERALLY 7/8" DIAMETER.)

WHERE CABLE GUARD FENCE OR MARKER POSTS ARE USED THE CULVERT MARKER POST SHOULD BE OMITTED.

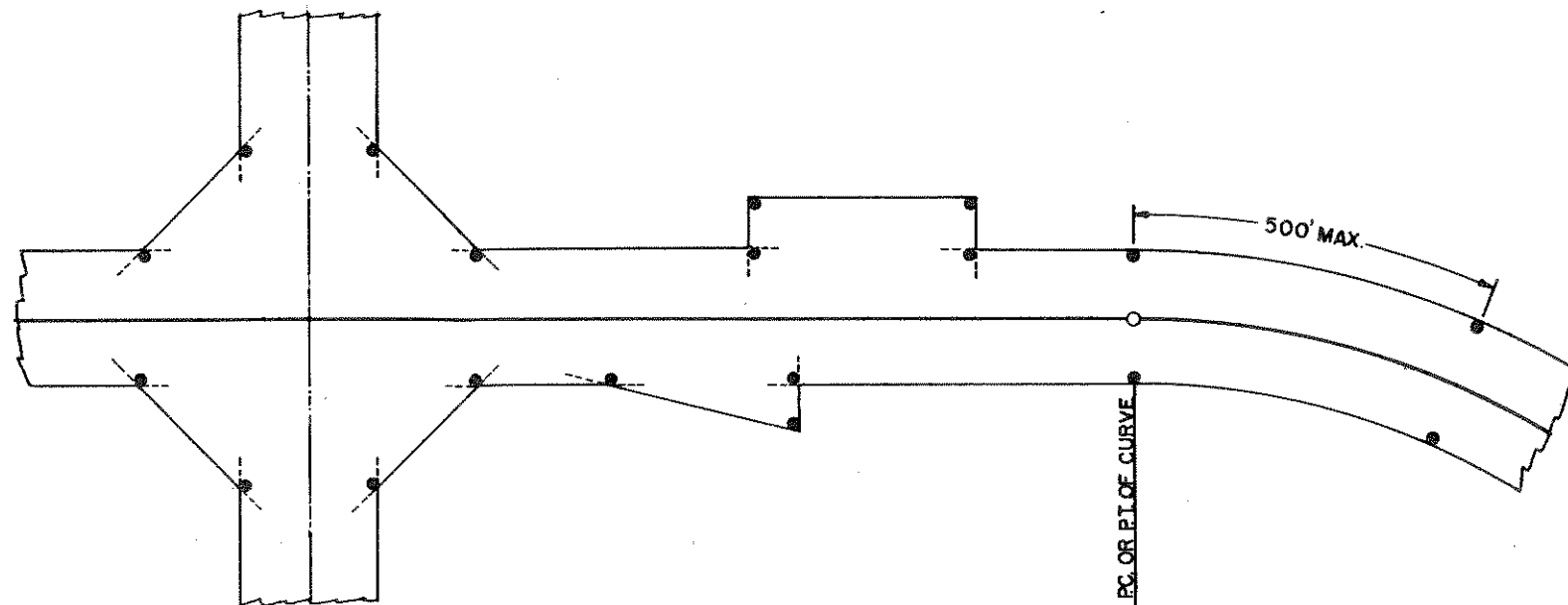
MARKER POST AS CULVERT MARKER TO BE PLACED AT BOTH ENDS OF CULVERT ON NEAR SIDE OF CULVERT. NO REFLECTOR BUTTON REQUIRED.

MARKER POSTS	
FOR SHOULDER DELINEATION AND CULVERTS	
STATE HIGHWAY COMMISSION OF WISC.	
RECOMMENDED FOR APPROVAL:	
<i>Frank Owen</i> DESIGN ENGINEER	
<i>W. J. Hub</i> CONSTRUCTION ENGINEER	DATE
APPROVED: OCT. 1, 1945	
DRAWN C.A.L.	DATE
CHECKED D.F.C.	STATE HIGHWAY ENGINEER



ELEVATION SHOWING SETTING AND PAINTING

POSTS MAY BE SHAPED AND PAINTED PRIOR TO SETTING. ANY DAMAGE TO PAINT SURFACE DURING ERECTION MUST BE TOUCHED UP BEFORE ACCEPTANCE.



TYPICAL PLAN SHOWING LAYOUT OF POSTS.

GENERAL NOTES

CONSTRUCTION DETAILS NOT SHOWN HERE SHALL CONFORM TO THE PERTINENT REQUIREMENTS OF THE STANDARD SPECIFICATIONS AND THE APPLICABLE SPECIAL PROVISIONS.

POSTS SHALL BE 6" CONFORMING TO THE REQUIREMENTS OF SEC. 4124.

POSTS SHALL BE LOCATED AT THE P.C. AND P.T. OF CURVES AND AT JOGS AND BREAKS IN THE R/W LINES. AT LEAST ONE POST SHALL BE SET ON EACH SIDE OF THE ROADWAY BETWEEN THE P.C. AND P.T. NOT MORE THAN 500 FT FROM THE ADJACENT POSTS. A SUFFICIENT NUMBER OF INTERMEDIATE POSTS ON TANGENT LINES SHALL BE SET SO THAT THEY WILL BE VISIBLE FROM ONE TO THE NEXT.

THE POSTS SHALL BE PLACED AT THE OUTER LIMITS OF THE HIGHWAY BUT ENTIRELY WITHIN THE R/W, AND SHALL BE SO PLACED THAT THE OUTER EDGE OF THE POST WILL BE TANGENT TO THE R/W LINE OR LINES EXTENDED.

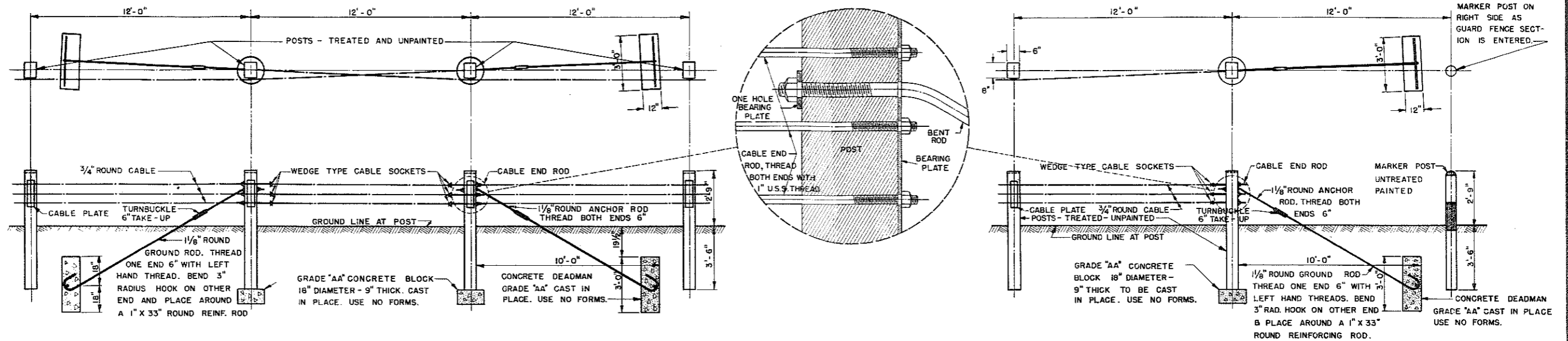
THE EXACT LOCATION SHALL BE STAKED IN THE FIELD BY THE ENGINEER.

SEE SEC. 4125.04 (f) FOR YELLOW PAINT SPECIFICATIONS.

SEE SEC. 4125.04 (e) FOR BLACK PAINT SPECIFICATIONS.

SEE SEC. 4125.04 (C)(1) FOR WHITE PRIME COAT.

MARKER POSTS	
FOR RIGHT OF WAY	
STATE HIGHWAY COMMISSION OF WISCONSIN	
RECOMMENDED FOR APPROVAL:	
<i>Frank Crane</i> DESIGN ENGINEER	<i>W. Bluh</i> CONSTRUCTION ENGINEER
APPROVED:	
DATE: OCT. 1, 1945	
DRAWN <i>D.V.D.</i> CHECKED <i>N.E.C.</i>	<i>E.H. Reuther</i> STATE HIGHWAY ENGINEER



INTERMEDIATE ANCHOR

END ANCHOR

GENERAL CONSTRUCTION NOTES

DETAILS OF CONSTRUCTION NOT SHOWN ON THIS SHEET SHALL CONFORM TO THE PERTINENT REQUIREMENTS OF THE STANDARD SPECIFICATIONS AND THE APPLICABLE SPECIAL PROVISIONS.

ALL PLATES TO BE MALLEABLE IRON CASTINGS.

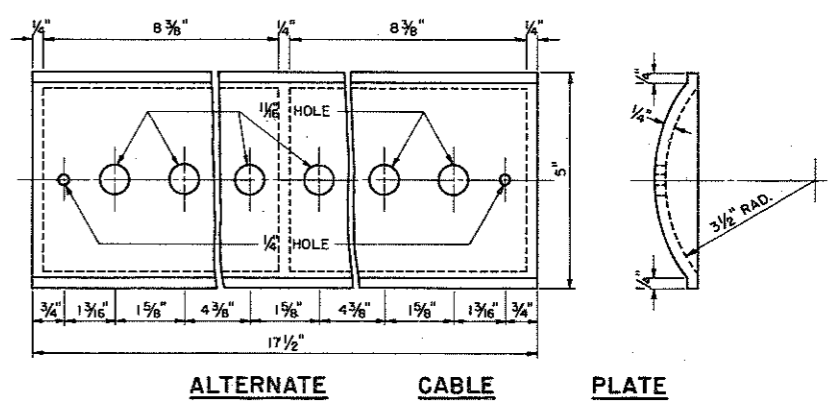
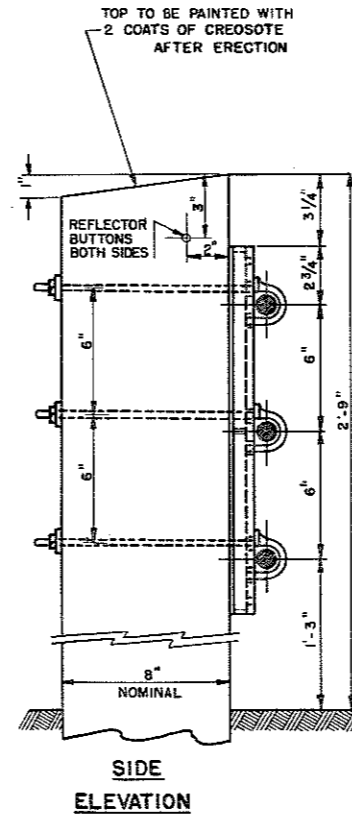
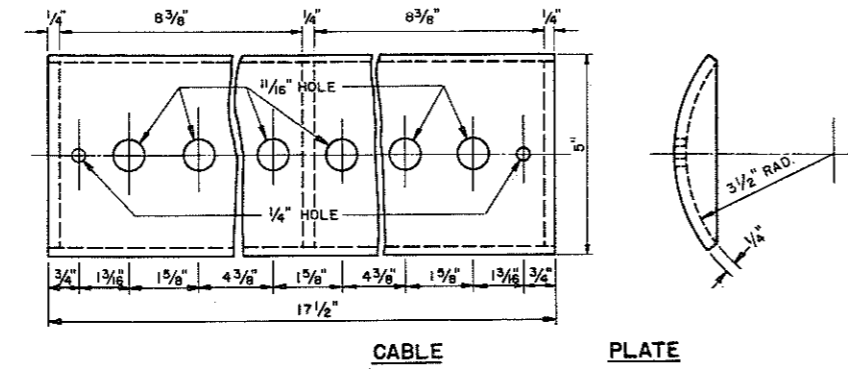
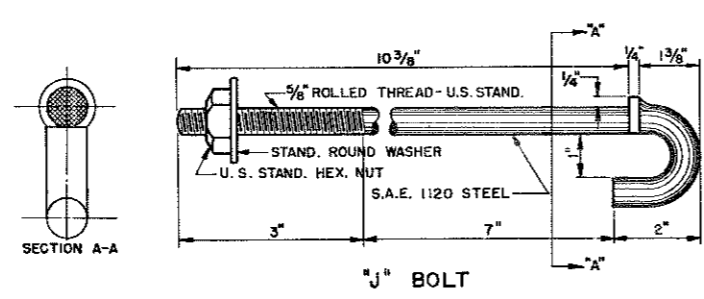
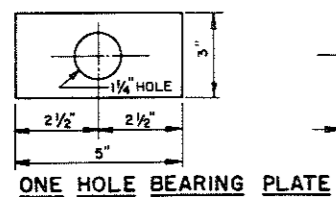
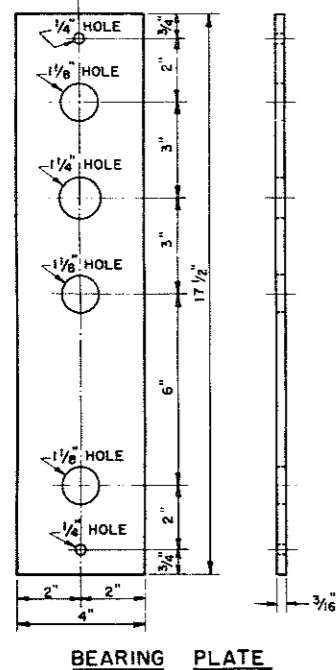
ALL FITTINGS TO BE GALVANIZED OR CADMIUM PLATED. BREAKAGE OF COATING DURING ERECTION WILL BE CAUSE FOR REJECTION AND MUST BE REPLACED.

VARIATIONS FROM THESE DESIGNS OF FITTINGS WILL BE CONSIDERED UPON SUBMISSION OF FOUR COPIES OF DETAILED PLANS FOR APPROVAL.

IN GENERAL, NO CONTINUOUS SECTION OF CABLE SHALL EXCEED 750 FEET WITHOUT INTERMEDIATE ANCHORAGE.

SEE TYPICAL SECTION SHEET FOR LOCATION OF RAIL WITH REFERENCE TO SHOULDER.

REFLECTOR BUTTONS SHALL BE SIZE NO. 1 CRYSTAL, FOR WOOD MOUNTING. DRILL MOUNTING HOLE TO FIT BUTTON (GENERALLY 7/8" DIAMETER.)



STANDARD DESIGN FOR

3 WIRE CABLE GUARD FENCE

STATE HIGHWAY COMMISSION OF WISCONSIN

RECOMMENDED FOR APPROVAL

APPROVED DATE OCT. 6, 1948

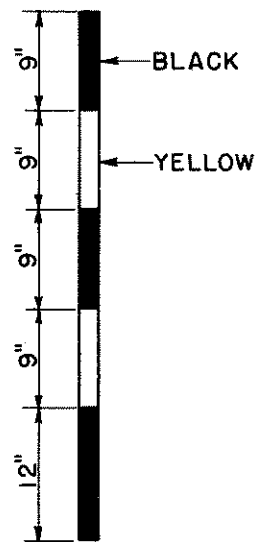
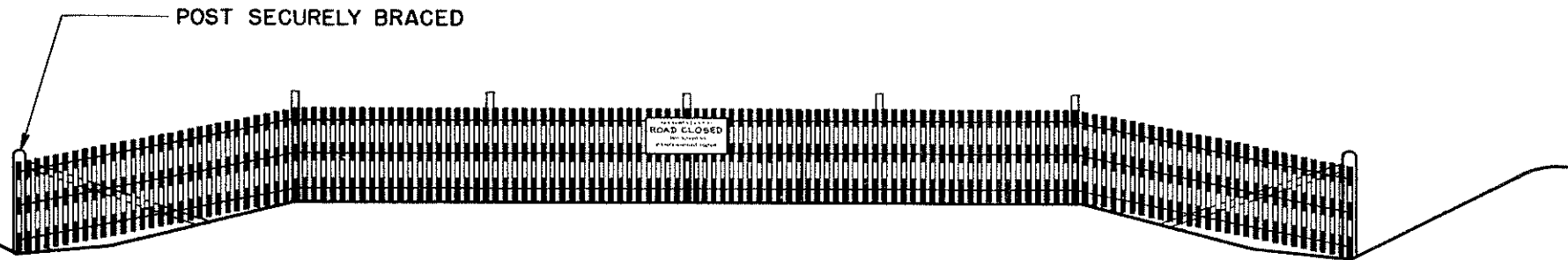
DRAWN BY R.E.G. CHECKED BY R.L.C.

CONSTRUCTION ENGINEER

STATE HIGHWAY ENGINEER

SECTION OF SNOW FENCE TO BE PAINTED ALTERNATELY BLACK AND YELLOW AS SHOWN BELOW.
 LENGTH TO BE SUFFICIENT TO REACH FROM TOE OF THE BACKSLOPE TO TOE OF THE BACKSLOPE.
 PROVIDE SUFFICIENT NUMBER OF INTERMEDIATE POSTS TO ADEQUATELY SUPPORT THE FENCE.

STANDARD "ROAD CLOSED" SIGN (W.H.C.- NO. R-15) TO BE ERECTED ON FENCE AT THE TOP ON
 THE CENTERLINE OF ROAD. SIGN WILL BE FURNISHED BY COMMISSION.



DETAIL SHOWING METHOD OF STRIPING
 FOR 4' SNOW FENCE.

STATE HIGHWAY COMMISSION OF WISCONSIN	
CONSTRUCTION BARRICADE	
RECOMMENDED FOR APPROVAL:	
<i>Frank Orave</i> DESIGN ENGINEER	
<i>W. Bluh</i> CONSTRUCTION ENGINEER	
APPROVED:-	
DRAWN <i>HM</i> CHECKED <i>WHG</i>	DATE <i>OCT. 1, 1945</i> <i>E. G. Rettig</i> STATE HIGHWAY ENGINEER

