

19

S-11

STATE OF WISCONSIN
DEPARTMENT OF TRANSPORTATION
DIVISION OF HIGHWAYS

PLAN AND PROFILE OF PROPOSED
NEW LONDON — FREEDOM ROAD
 EAST SECTION
 C.T.H. "S"
 OUTAGAMIE COUNTY

STATE PROJECT NUMBER
6038-2-72

Scales: Plan 1" = 100 ft
 Profile Hor 1" = 100 ft Vert 1" = 10 ft
 Cross Sections Hor 1" = 5 ft Vert 1" = 5 ft

| STATE PROJECT | FEDERAL PROJECT | |
|---------------|-----------------|----------|
| | PROJECT | CONTRACT |
| 6038-2-71 | RS 1090 (I) | 1 |
| 6038-2-72 | RS 1090 (I) | 2 |
| | | |
| | | |

Index of Sheets

- Sheet No. 1 Title
- Sheet No. 2 - 2.2 Typical Cross Sections
- Sheet No. 3 Estimate of Quantities
- Sheet No. 3A Miscellaneous Quantities
- Sheet No. 4 - 4.5 Right of Way Plat
- Sheet No. 5 - 5.4 Plan and Profile
- Sheet No. 6 - 6.10 Standard Details
- Sheet No. - Structure Plans
- Sheet No. - Computer Earthwork Data
- Sheet No. 8 - 8.22 Cross Sections

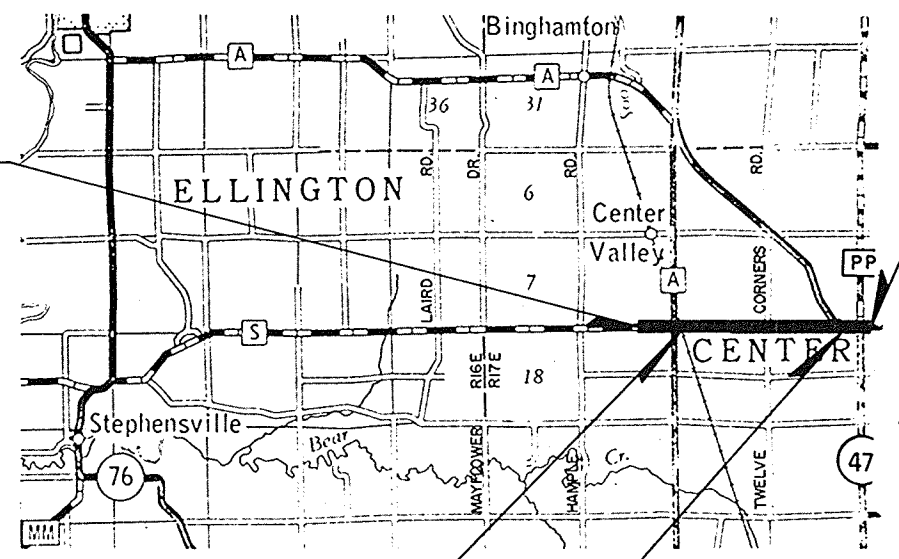
TOTAL SHEETS = 51



Design Designation

- A.D.T. 1976 = 600
- A.D.T. 1996 = 920
- D.H.V. 1996 = 120
- D. = 45-55
- T. = 5.0%
- V. = 50 M.P.H.

BEGIN PROJECT 6038-2-71,72
STATION 253 + 67.00
 N = 205,900 ± 200 FT. *
 E = 2,401,800 ± 200 FT. *
 LOCATED 24.50 FT. SOUTH AND 2105.55 WEST OF
 THE S.E. CORNER OF SEC. 8, T22N, R17E
 SCALED FROM U.S.G.S. 15 MIN. SERIES
 * APPLETON QUADRANGLE



END PROJECT 6038-2-71,72
STATION 382 + 00.00
 N = 205,910 ± 200 FT. *
 E = 2,414,640 ± 200 FT. *
 LOCATED 326 FT. SOUTH AND 269.91 FT. EAST OF
 THE S.E. CORNER OF SEC. 10, T22N, R17E
 * SCALED FROM U.S.G.S. 15 MIN. SERIES
 APPLETON QUADRANGLE

STA. 278 + 35.84 TO STA. 278 + 49.29
 EXCEPTION TO NET LENGTH OF C
 STA. 364 + 87.06 TO STA. 368 + 87.06
 EXCEPTION TO NET LENGTH OF C

Conventional Signs

- County Line
- Township or Range Line
- Section Line
- New Right of Way Line
- Present Right of Way Line
- Wire Fence (type)
- Corporate or City Limits
- Property Line
- Traveled Way or P.E.
- Railroads
- Base of Survey Line
- Caution Symbol (combustible fluids under pressure)
- Culverts in Place
- Culverts Required
- Drop Inlet
- Power Pole
- Telephone or Telegraph Pole
- Right of Way Markers
- Reference Stake for Hubs Only
- Marsh
- Hedge
- Trees
- Ground Elevation
- Grade Elevation

Layout
 Scale 0 1/2 1 MILE

Total Net Length of Centerline . 2.352 Mi.

S-11

APPROVED FOR OUTAGAMIE COUNTY

12-20-76 DATE
 Signature of Official

PLANS PREPARED BY
 OWEN AYRES & ASSOCIATES
 CONSULTING ENGINEERS
 GREEN BAY, WISCONSIN

STATE OF WISCONSIN
 DEPARTMENT OF TRANSPORTATION
 DIVISION OF HIGHWAYS

Surveyor: _____ District Checker: H.A.T.
 Designer: _____ C.O. Checker: H.T.
 Dist. Supervisor: J.E.P. C.O. Monitor: _____

Correct: _____

Date: 3-15-78 C.R. Ryan
 Chief Engineer

Recommended for Approval:
 Date: 4-23-78 R.D. Strand
 Chief of Planning Development

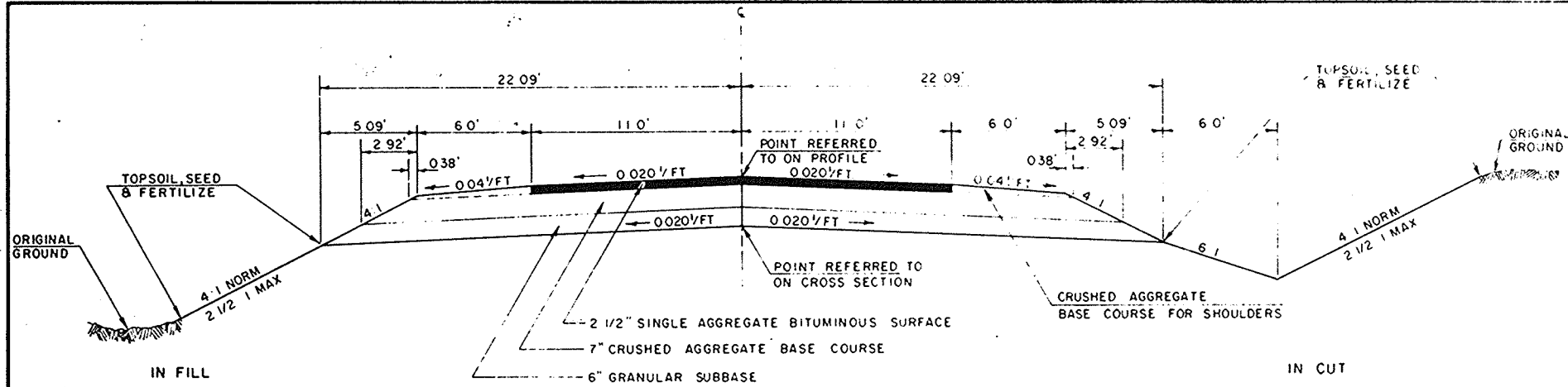
Approved: _____
 Date: 4-27-78 H.J. Judd
 State Highway Engineer

U.S. DEPARTMENT OF TRANSPORTATION
 FEDERAL HIGHWAY ADMINISTRATION
 REGION 5 WISCONSIN DIVISION

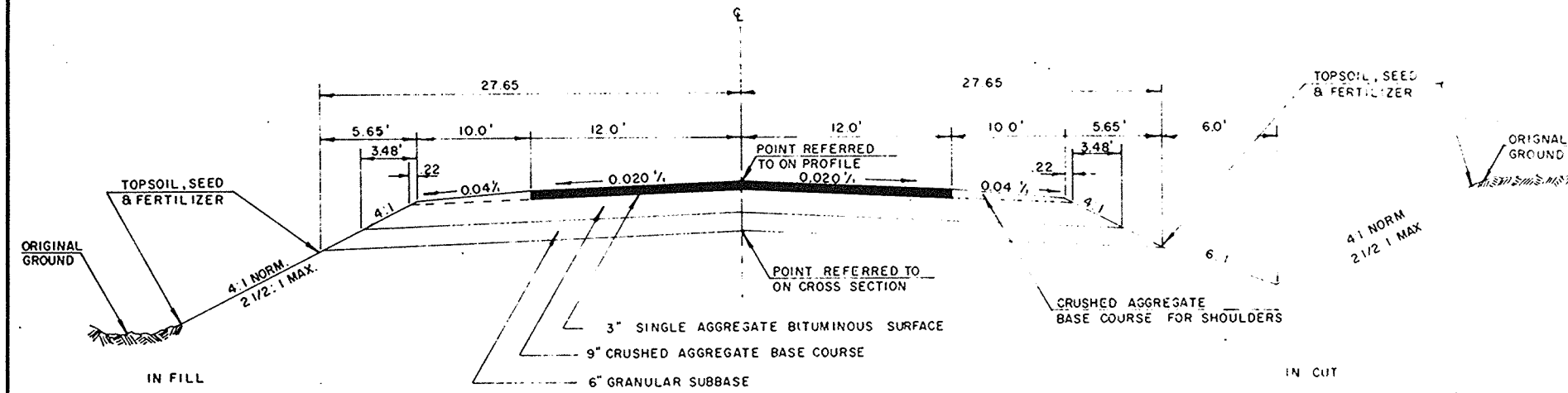
Approved: _____
 Date: _____
 District Engineer

S-11

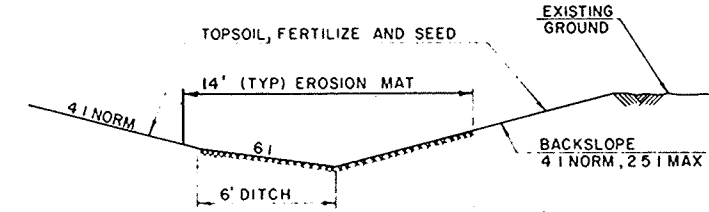
| | |
|--------------------------|-----------|
| PROJECT DESIGNATION | SHEET NO. |
| 6038-2-71,72 | 2 |
| TYPICAL SECTIONS FOR | |
| C.T.H. "S" OUTAGAMIE CO. | |



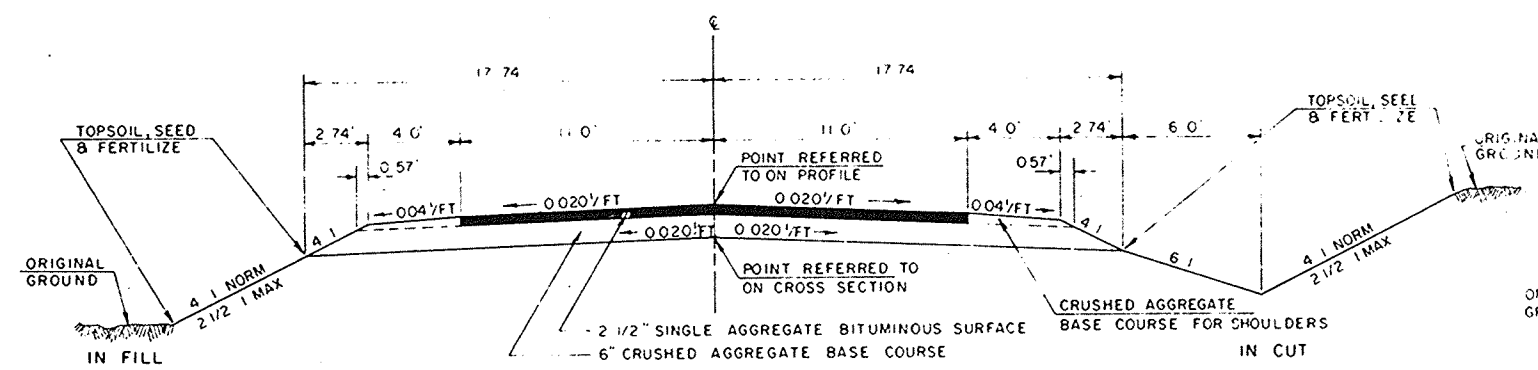
TYPICAL FINISHED SECTION
C.T.H. "S" AND C.T.H. "PP"



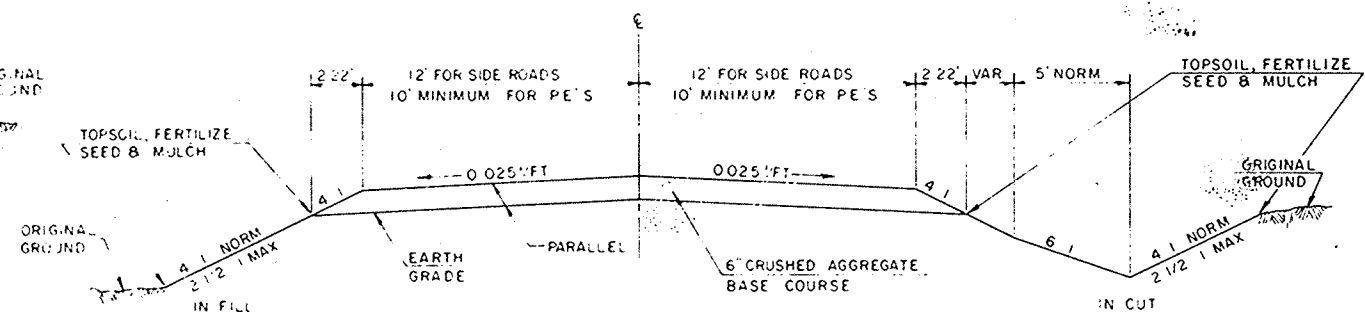
TYPICAL FINISHED SECTION
C.T.H. "A"



EROSION MAT



TYPICAL FINISHED SECTION
SIDE ROADS



TYPICAL CROSS SECTION FOR PRIVATE ENTRANCES
AND GRAVEL SURFACE SIDE ROADS

ESTIMATE OF QUANTITIES

6038 -- 2 -- 71 CONTRACT NO. 1 - GRADE, SUBBASE, & BASE COURSE (SHAPING & COMPACTING) S.A.B.S. (PLACING)
 6038 -- 2 -- 72 CONTRACT NO. 2 - BASE COURSE (PRODUCING & HAULING) S.A.B.S. MIX (PRODUCING & HAULING)

STATE PROJECT NUMBER

6038-2-71,72

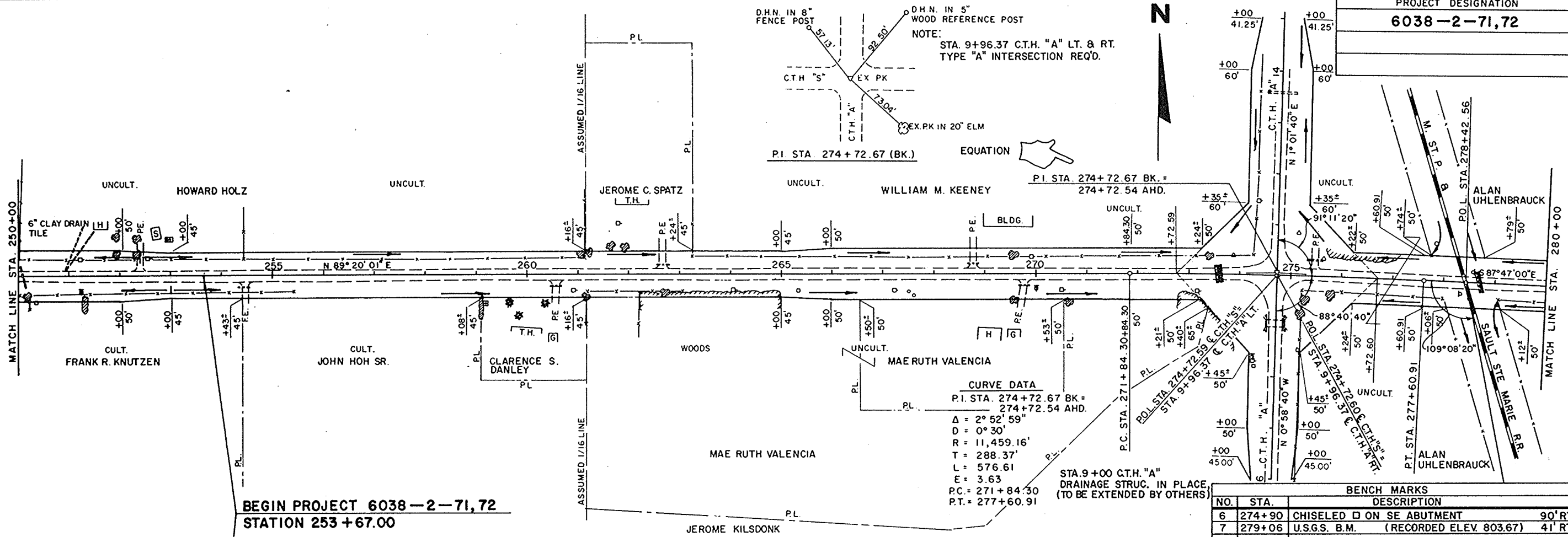
SHEET NO.

3

| CONTRACT NO. | STATION TO STATION | NET LENGTH OF CENTER LINE | CLEARING | | GRUBBING | | EXCAVATION | | GRANULAR SUBBASE COURSE, 6 - INCH | FINISHING ROADWAY | PRODUCING & HAULING CRUSHED AGGREGATE BASE COURSE | SHAPING & COMPACTING CRUSHED AGGREGATE BASE COURSE | PRODUCING & HAULING SINGLE AGGREGATE BITUMINOUS SURFACE | PLACING SINGLE AGGREGATE BITUMINOUS SURFACE | BITUMINOUS MATERIAL FOR SURFACE COURSE | CULVERT PIPE CLASS III | | | | | APRON ENDWALLS FOR CULVERT PIPE | | | | | | | | | | | | | |
|-----------------------|-----------------------|---------------------------|----------|----------|----------|----------|--------------|----------|-----------------------------------|-------------------|---|--|---|---|--|------------------------|---------|---------|-------|-------|---------------------------------|-------|-------|-------|----------|----------|----------|----------|----------|---------|---------|---------|---------|---------|
| | | | 20101 | 20102 | 20104 | 20105 | UNCLASSIFIED | BORROW | | | | | | | | 20503 | 20801 | 21220 | 21301 | 90001 | 90001 | 90002 | 90002 | 40602 | 18-INCH | 24-INCH | 30-INCH | 42-INCH | 60-INCH | 18-INCH | 24-INCH | 30-INCH | 42-INCH | 60-INCH |
| | | | UNIT | LIN. FT. | STA. | IN. DIA. | STA. | IN. DIA. | | | | | | | | CU. YD. | CU. YD. | SQ. YD. | L.S. | TON | TON | TON | TON | TON | LIN. FT. | LIN. FT. | LIN. FT. | LIN. FT. | LIN. FT. | EA. | EA. | EA. | EA. | EA. |
| 1 | 253+67.00 - 382+00.00 | 12,419.55 | 2 | 355 | 2 | 355 | | 29,745 | 9,200 | 63,650 | | | | | | | 560 | 198 | 130 | 108 | 120 | 40 | 8 | 4 | 4 | 2 | | | | | | | | |
| 2 | 253+67.00 - 382+00.00 | 12,419.55 | | | | | | | | | 27,800 | | 5,735 | | 344 | | | | | | | | | | | | | | | | | | | |
| PROJECT TOTALS | | 12,419.55 | 2 | 355 | 2 | 355 | | 29,745 | 9,200 | 63,650 | | | 27,800 | | 344 | | 560 | 198 | 130 | 108 | 120 | 40 | 8 | 4 | 4 | 2 | | | | | | | | |

* UNDISTRIBUTED

| CONTRACT NO. | CONCRETE CURB TYPE-"J" | LANDMARK REFERENCE MONUMENT | CALCIUM CHLORIDE SURFACE TREATMENT | SALVAGED TOPSOIL | EROSION BALES | EROSION MAT | FERTILIZER | SEEDING | SODDING | FIELD OFFICE TYPE-"A" | CULVERT PIPE, CLASS III 36-INCH | APRON ENDWALLS FOR CULVERT PIPE 36-INCH | CONCRETE CURB & GUTTER 36-INCH TYPE "D" MOUNTABLE | CONCRETE SURFACE DRAINS | CONCRETE CURB & GUTTER 30-INCH TYPE "D" | MARKER POSTS |
|--------------|------------------------|-----------------------------|------------------------------------|------------------|---------------|-------------|------------|---------|---------|-----------------------|---------------------------------|---|---|-------------------------|---|--------------|
| | 60104 | 62101 | 62301 | 62505 | 62810 | 62802 | 62901 | 63002 | 63101 | 64201 | 52009 | 52067 | 90003 | 40934 | 60133 | 61421 |
| | LIN. FT. | EA. | TON | SQ. YD. | EA. | SQ. YD. | CWT. | LB. | SQ. YD. | L.S. | L.F. | EA. | L.F. | C.Y. | L.F. | EA. |
| 1 | 270 | 20 | 23 | 73,900 | 20 * | 4,600 | 47 | 1,010 | 775 | 1 | 184 | 8 | 300 | 3 | 209 | 14 |
| 2 | | | | | | | | | | | | | | | | |
| | 270 | 20 | 23 | 73,900 | 20 * | 4,600 | 47 | 1,010 | 775 | 1 | 184 | 8 | 300 | 3 | 209 | * 14 |

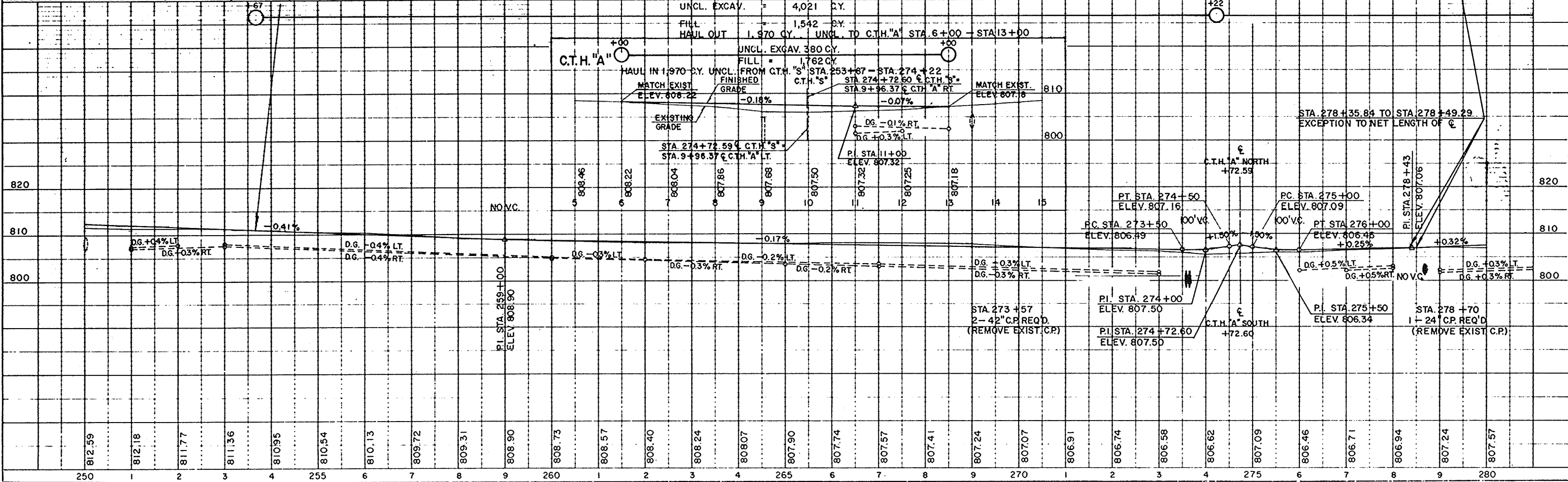


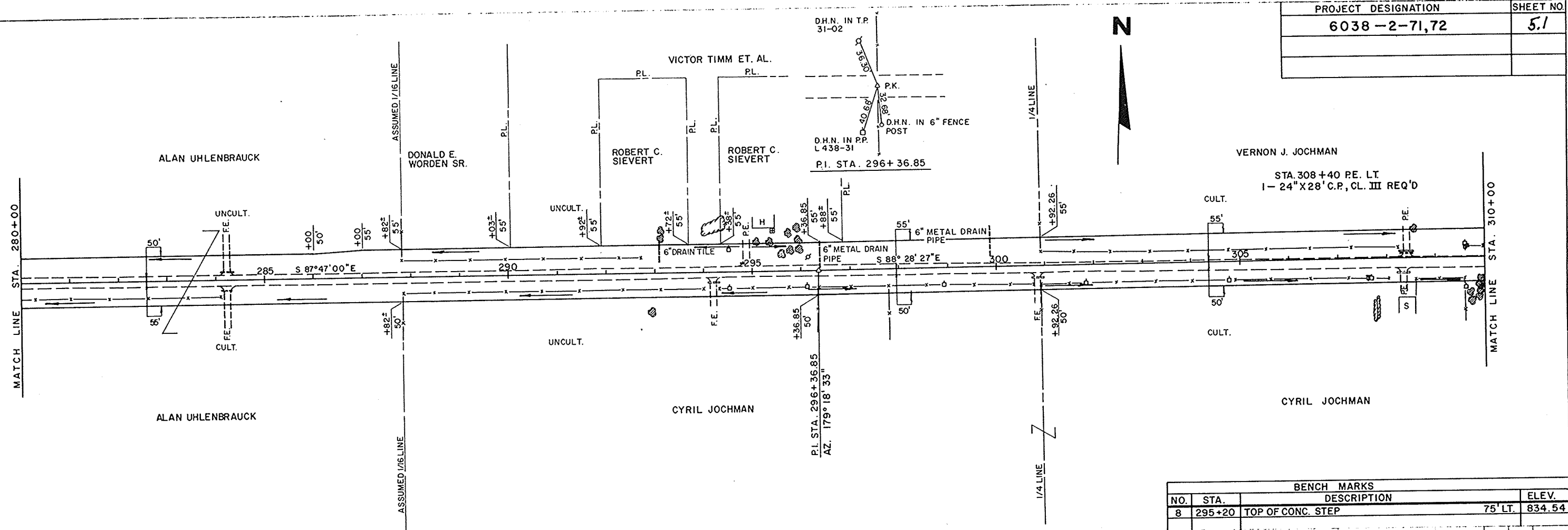
BEGIN PROJECT 6038-2-71,72
STATION 253+67.00

STA. 9+00 C.T.H. "A"
DRAINAGE STRUC. IN PLACE
(TO BE EXTENDED BY OTHERS)

| NO. | STA. | DESCRIPTION | ELEV. |
|-----|--------|---------------------------------------|----------------|
| 6 | 274+90 | CHISELED □ ON SE ABUTMENT | 90' RT. 804.51 |
| 7 | 279+06 | U.S.G.S. B.M. (RECORDED ELEV. 803.67) | 41' RT. 804.04 |

NET LENGTH OF CENTERLINE STA. 253+67 TO 280+00 = 2133.00 LIN. FT.

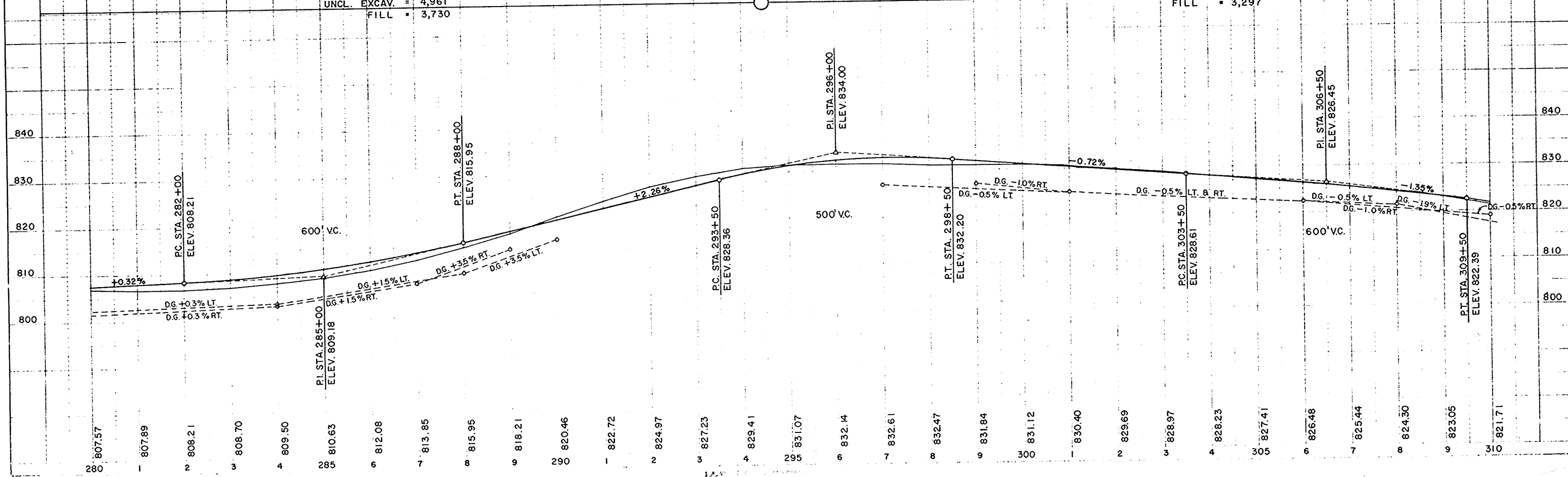




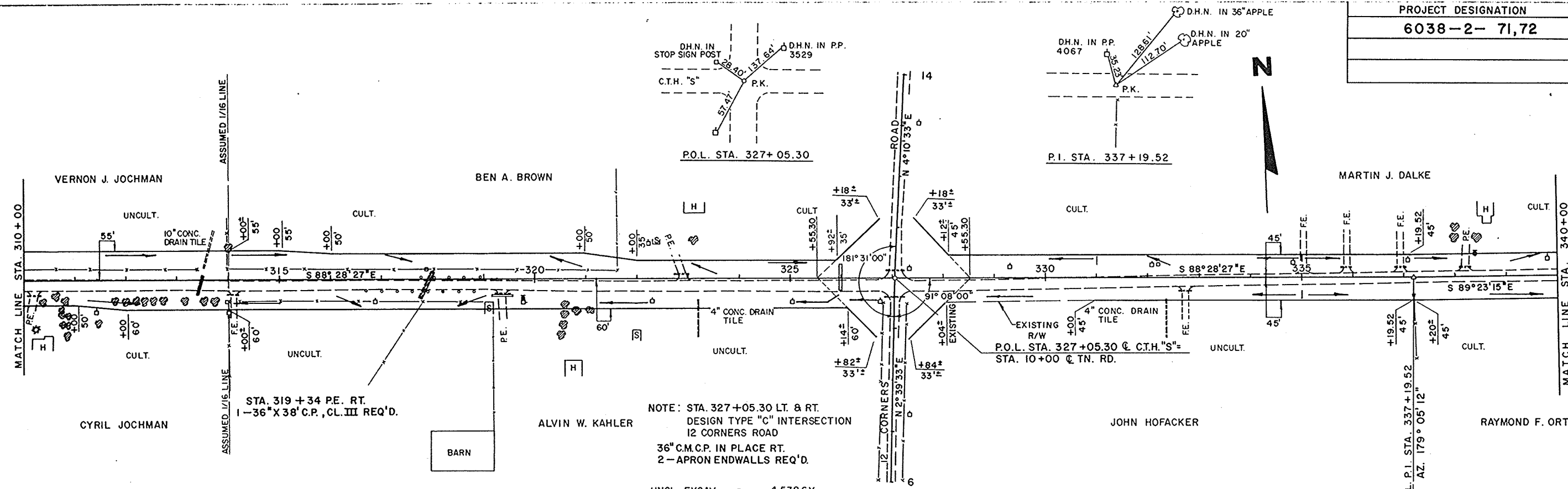
NET LENGTH OF CENTERLINE STA. 280+00 TO STA. 310+00 = 3000 LIN. FT.

UNCL. EXCAV. = 4,961
FILL = 3,730

UNCL. EXCAV. = 4,385
FILL = 3,297

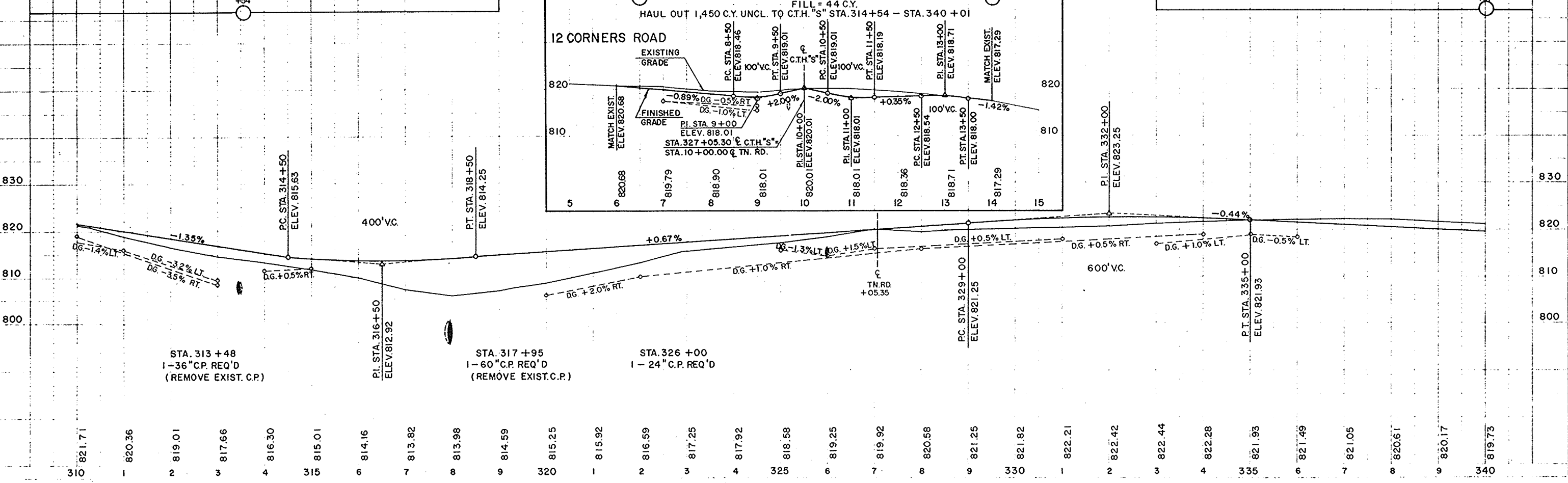


| | |
|---------------------|-----------|
| PROJECT DESIGNATION | SHEET NO. |
| 6038-2-71,72 | 5,2 |

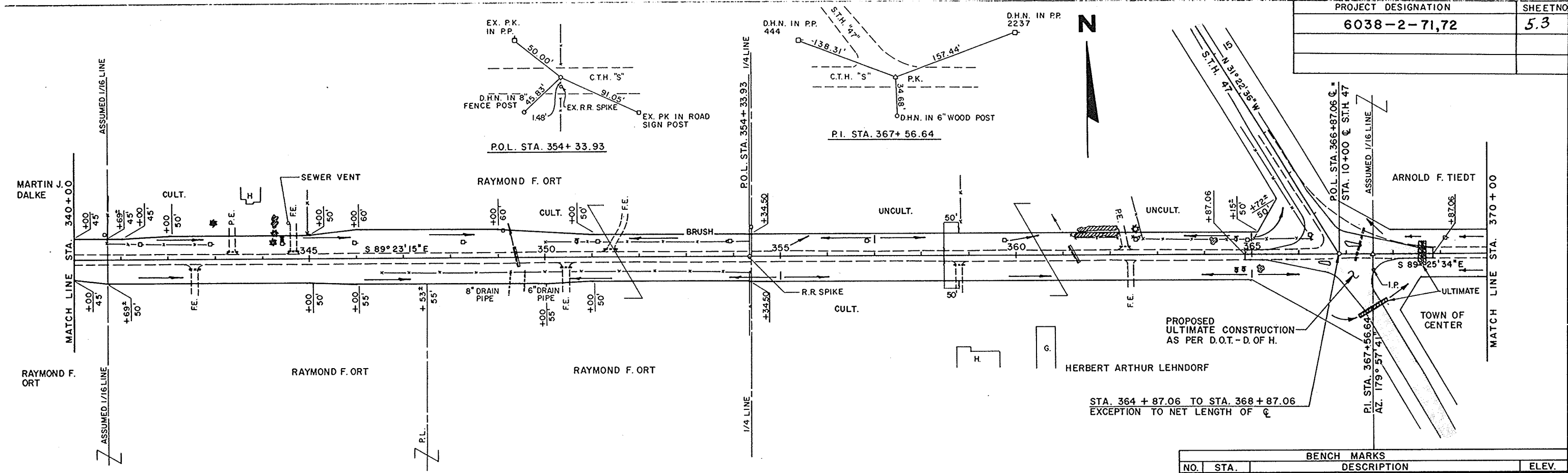


| BENCH MARKS | | | |
|-------------|-------|---------------|------------------|
| NO. | STA. | DESCRIPTION | ELEV. |
| 9 | 13+06 | SPIKE IN P.P. | 32.5' LT. 818.46 |

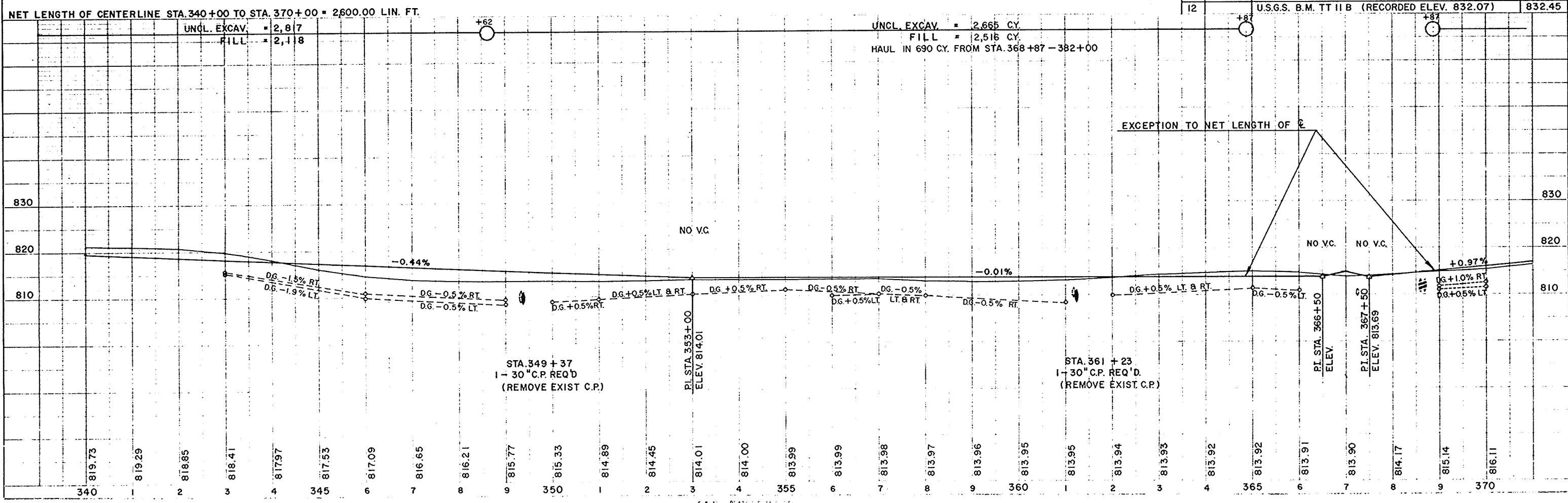
NET LENGTH OF CENTERLINE STA. 310+00 TO STA. 340+00 = 3000 LIN. FT.



| | |
|---------------------|----------|
| PROJECT DESIGNATION | SHEET NO |
| 6038-2-71,72 | 5.3 |



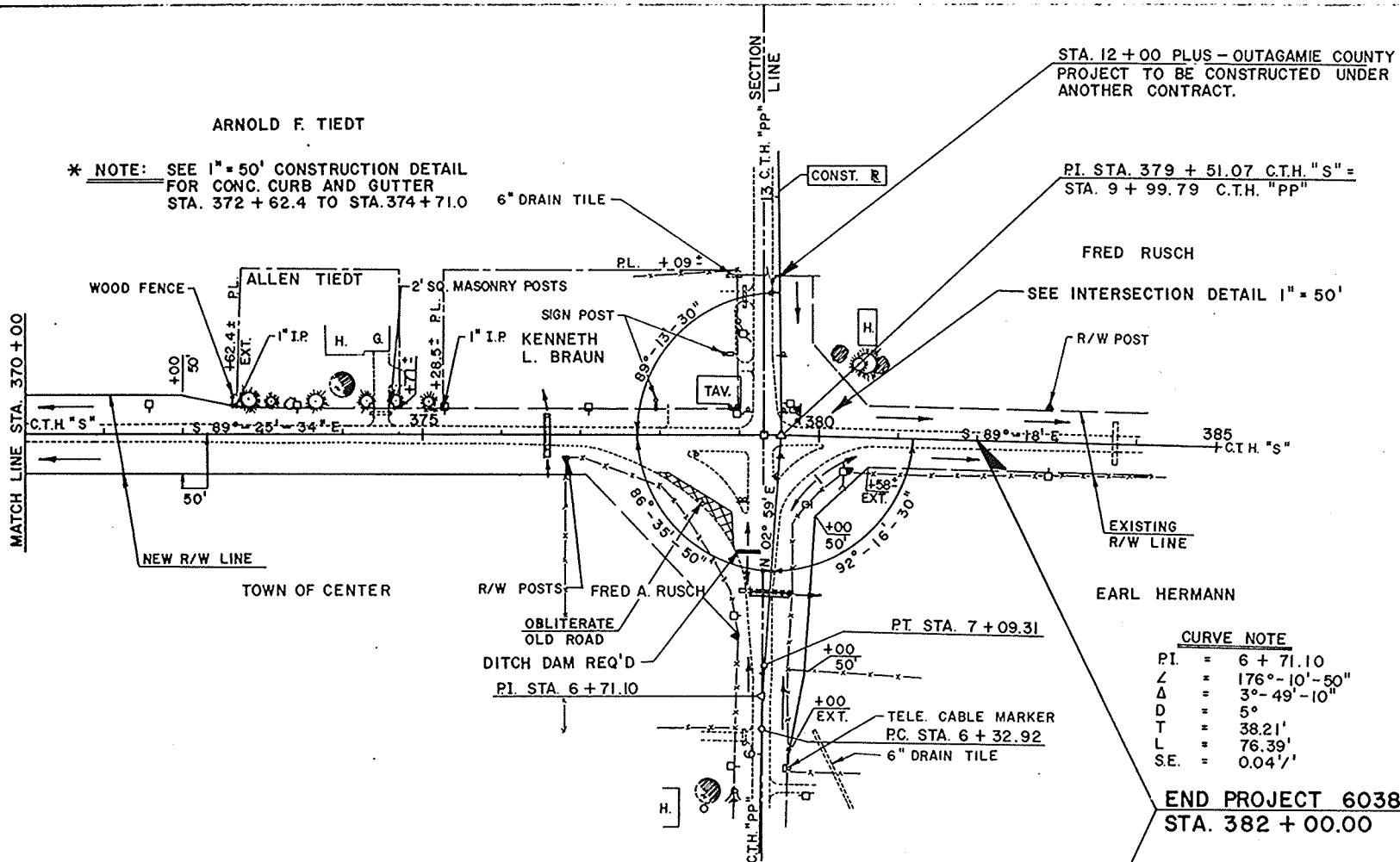
| BENCH MARKS | | | |
|-------------|-------|---|------------------|
| NO. | STA. | DESCRIPTION | ELEV. |
| 10 | 12+64 | SPIKE IN P.P. | 32.5' LT. 814.66 |
| 11 | | SPIKE IN P.P. ON NW COR. "PP" & "S" | 823.81 |
| 12 | | U.S.G.S. B.M. TT II B (RECORDED ELEV. 832.07) | 832.45 |



PLAN
 NOTE BOOK
 No.

PROFILE
 NOTE BOOK
 No.

| | |
|---------------------|-----------|
| PROJECT DESIGNATION | SHEET NO. |
| 6038 - 2 - 71,72 | 5.4 |
| | |



CURVE NOTE

| | | |
|-----|---|------------------|
| PI. | = | 6 + 71.10 |
| Z | = | 176° - 10' - 50" |
| Δ | = | 3° - 49' - 10" |
| D | = | 5' |
| T | = | 38.21' |
| L | = | 76.39' |
| SE. | = | 0.04'/' |

END PROJECT 6038 - 2 - 71,72
STA. 382 + 00.00

